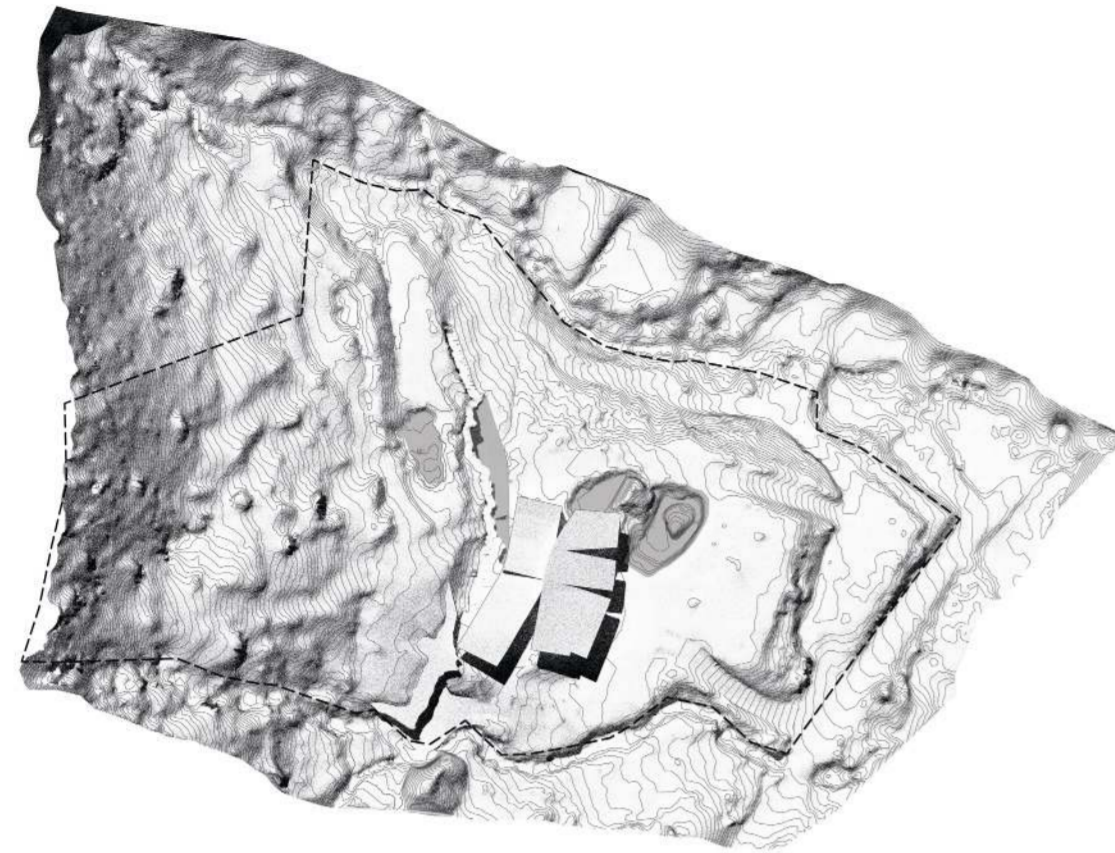


Aida

Aida (間) - “the space in-between.”

Aida describes the quiet, meaningful space where things meet without touching – a moment, a distance, or a pause that allows connection, balance, and harmony.



Site plan

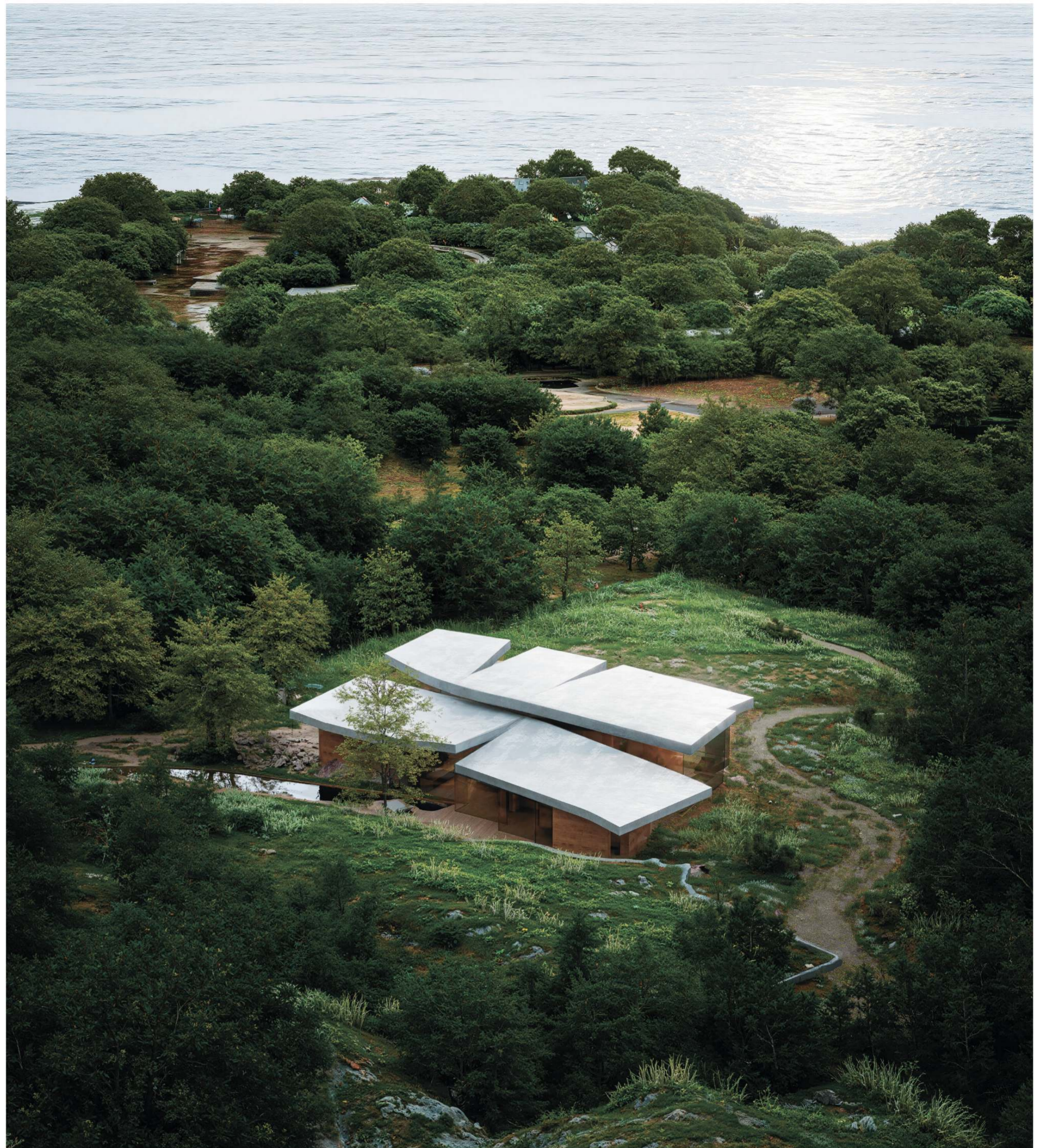
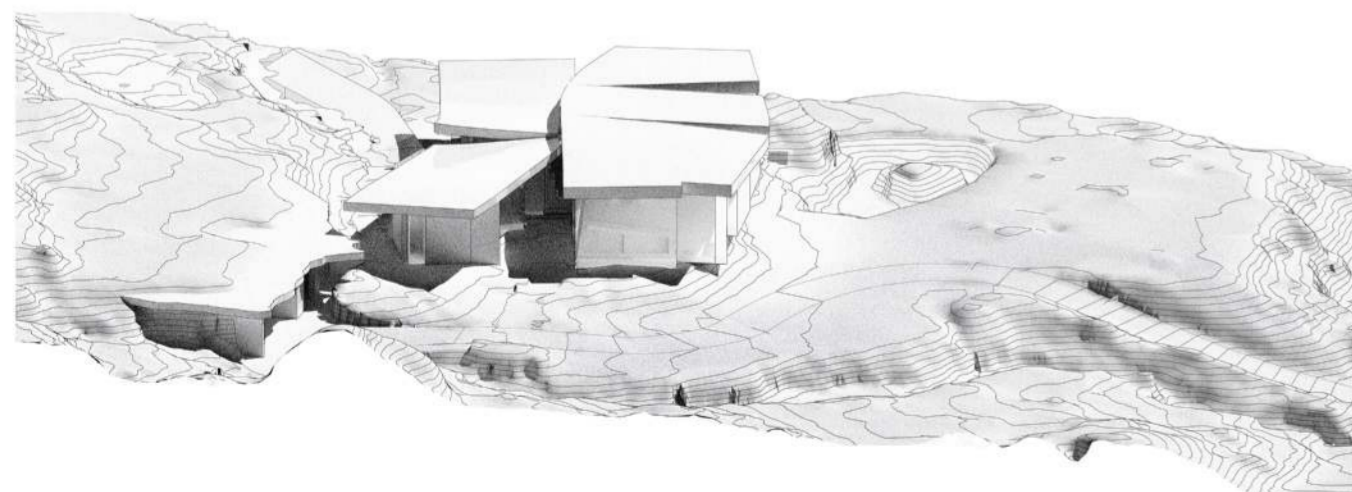
0 10 20 30

Yakushima is an island of striking beauty and powerful contrasts. Here, towering mountains rise directly from the endless ocean, bright sunlight shifts to pouring rain, and delicate lace of green vines and trees entwines massive age-old boulders.

The house is conceived as a space in between: between nature and human presence, interior and landscape, shifting weather and a state of calm. It does not oppose its surroundings, but enters into a dialogue with them—at times following the terrain and natural lines, at others gently contrasting with them. Heavy stone volumes stand alongside transparent glass surfaces; mass and lightness coexist, reflecting the ever-changing character of the island.

The building's form is deliberately fragmented, as if torn apart. This allows views to open in every direction and creates a rich variety of spatial scenarios, both inside and out. Intimate, sheltered retreats give way to open terraces, while the play of scale guides perception—from expansive panoramas of ocean and forest to the quiet contemplation of nature's smallest, almost imperceptible details.

The landscape design is shaped by the existing terrain and a desire to preserve it as fully as possible. The paths follow the site's natural contour lines, emphasizing the inherent structure of the landscape. Existing ponds on the site are preserved and the water network expands with an addition of an outdoor swimming pool and a bath complex. Together, natural and man-made water bodies are seamlessly woven into the terrain, gently dissolving the boundary between the built and the natural.



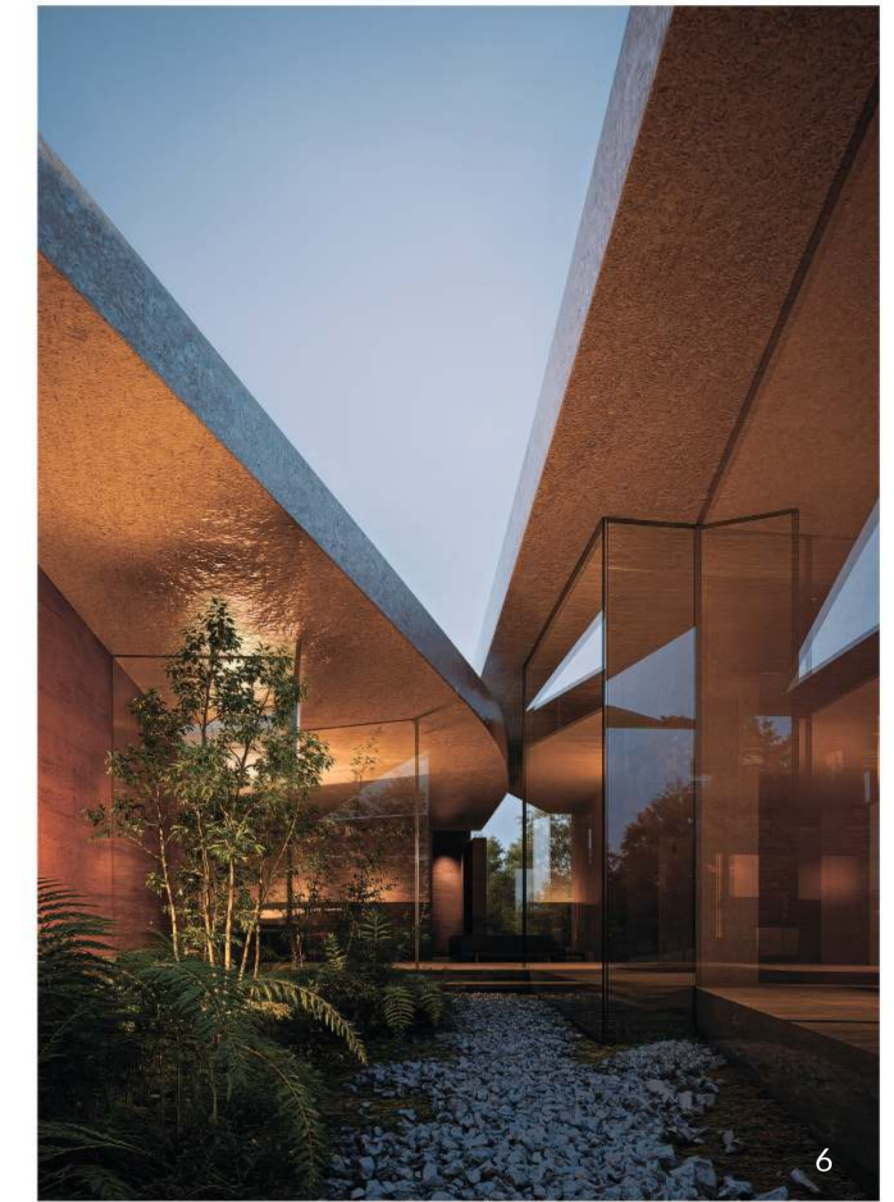
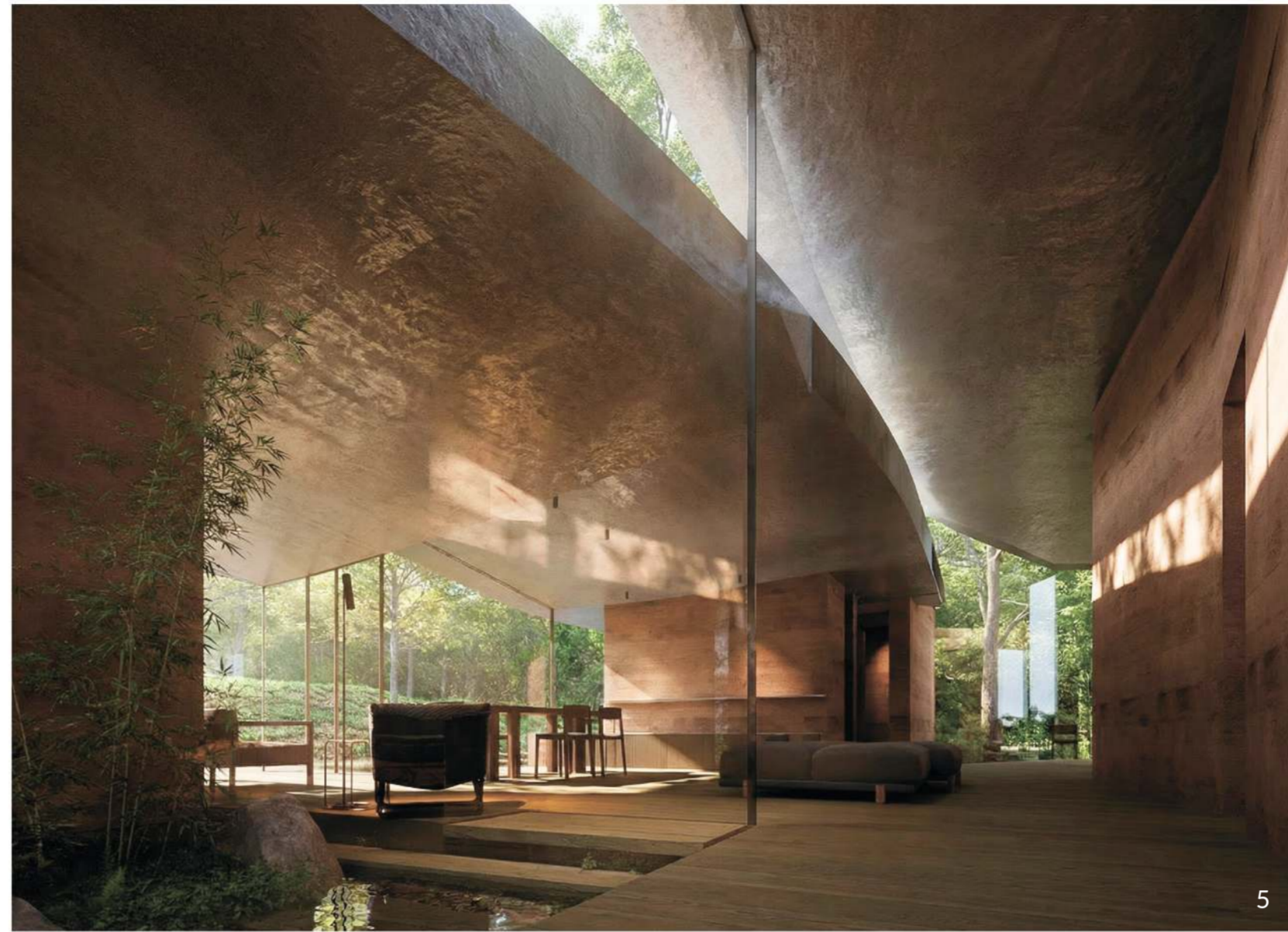
The building's contour is permeable: there is no single main entrance. Instead, glass walls equipped with sliding systems open in multiple locations. This blurs the boundary between the inside and the outside, creating countless routes and scenarios for inhabiting the space. The house literally "breathes," opening fully to its surroundings on warm summer evenings, or closing itself against cold rain and wind to provide warmth and shelter.

To fully reveal the richness of the local topography, the building follows the terrain—rising above ground level in some places, and cutting into the slope in others. This approach creates changes in floor height and forms an artificial landscape within the house itself. Movement through the space becomes an endless exploration, where each step reveals a new perspective and a new view of the surrounding nature.



Views

1. Pool area
2. xx
3. Bedroom
4. Living room
5. Hall
6. Entrance



Floor plan

Living area

1. Hall 28 m²
2. Living-dining room 38 m²
3. Library 5 m²
4. Bathroom 2 m²
5. Kitchen area 15 m²
6. Pantry 8 m²
7. Storage 7 m²
8. Technical room 3 m²

Bedroom

15. Bedroom 24 m²
16. Bathroom 5 m²

Outdoor spaces

17. Outdoor pool 72 m²
18. Outdoor terrace 83 m²
19. Parking 41 m²
20. Outdoor storage area 70 m²

Bath area 31 m²

9. Entrance area
10. Changing room 1.6 m²
11. Shower 3 m²
12. Sauna 3 m²
13. Bath
14. Plunge pool





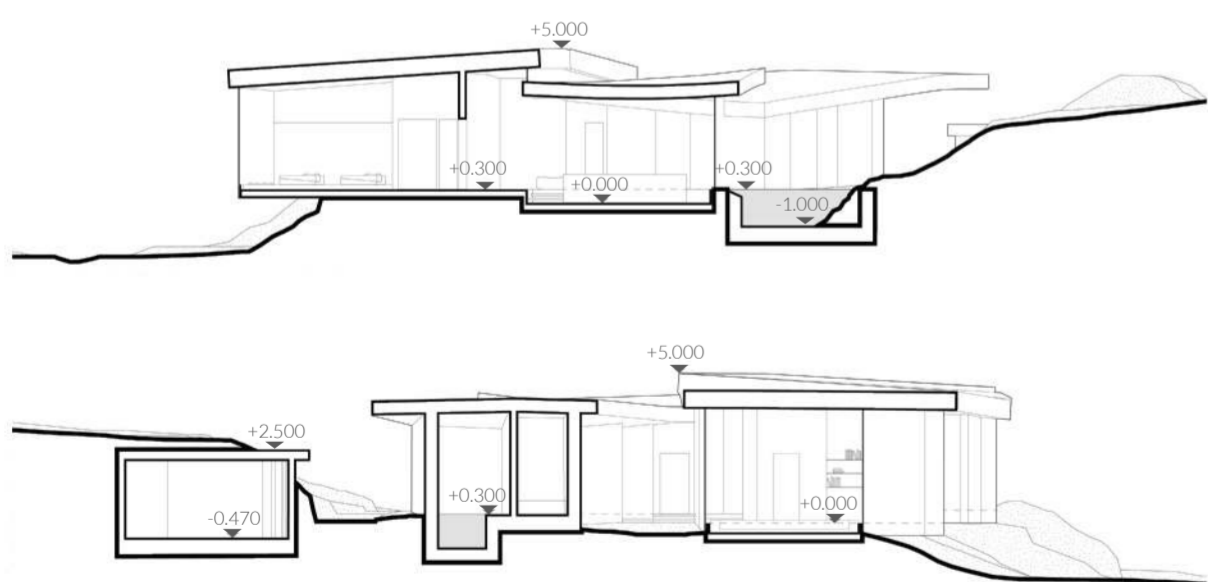
Gross floor area	295 m ²
Building area	605 m ²
Number of stories	1
Max height	+5.000 m

Dramatic roof cantilevers create a threshold between exterior and interior, forming a series of comfortable, shaded outdoor areas.

In the finishes natural materials were prioritized. Rough concrete gradually merges with the scattered stones under the influence of the weather. The interior features materials characteristic of Yakushima's forests—natural stone and wood. Polished stone surfaces and warm, smooth timber capture reflections and light, creating an intimate and welcoming atmosphere. Mobile, modular furniture adds flexibility, allowing for multiple ways of the space use. The interior responds to the residents' moods, as well as to nature and weather.

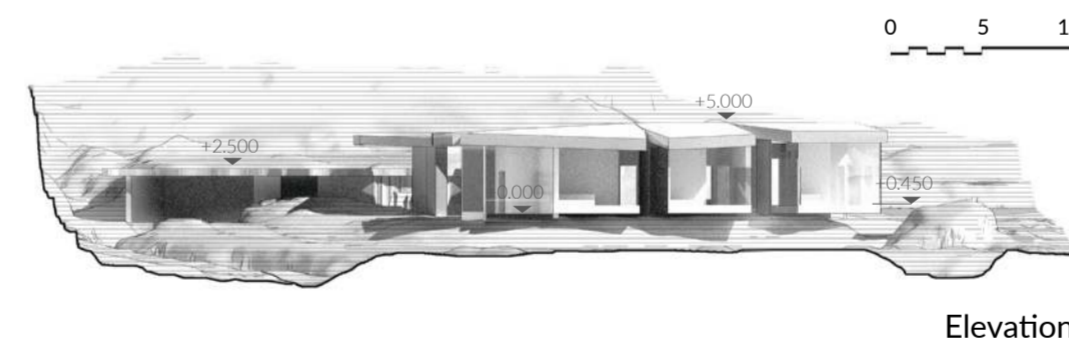
Views

1. Driveway
2. Outdoor pool
3. Garden
4. Aerial view

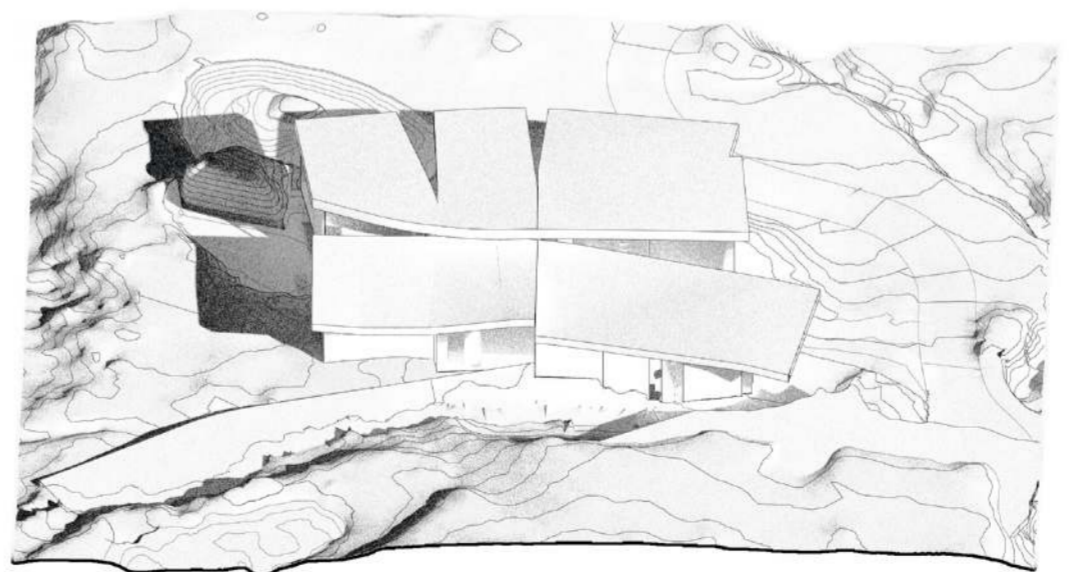



Section 1-1


Section 2-2

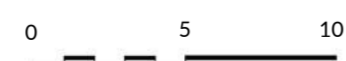


Elevation



Elevation / axo

The landscape design and shape of the building is guided by the existing terrain, with the goal of preserving it as much as possible. Pathways follow the natural contour lines, emphasizing the richness of the landscape and working in harmony with it. Artificial landscape of the interior bleeds through the contour of the house creating seamless transitions between indoor spaces and terraces.


M 1:250

