



Echo of the Mountain

Echo of the Mountain

山の響き

NOT A HOTEL - Yakushima, Japan



Yakushima is defined by its water and steep peaks. It is said that "it rains 35 days a month," and to live here is to inhabit the rain itself. Emerging organically from the landscape, the design appears as a tectonic extension of the mountains.

Three sloping roofs follow the rhythm of the surrounding peaks, channeling the water, while central cracks capture the breath of the nature. More than a shelter, the structure acts as a sensory amplifier—capturing the rhythm of the rain and the flow of the forest—transforming the wild elements into a curated sensory experience.

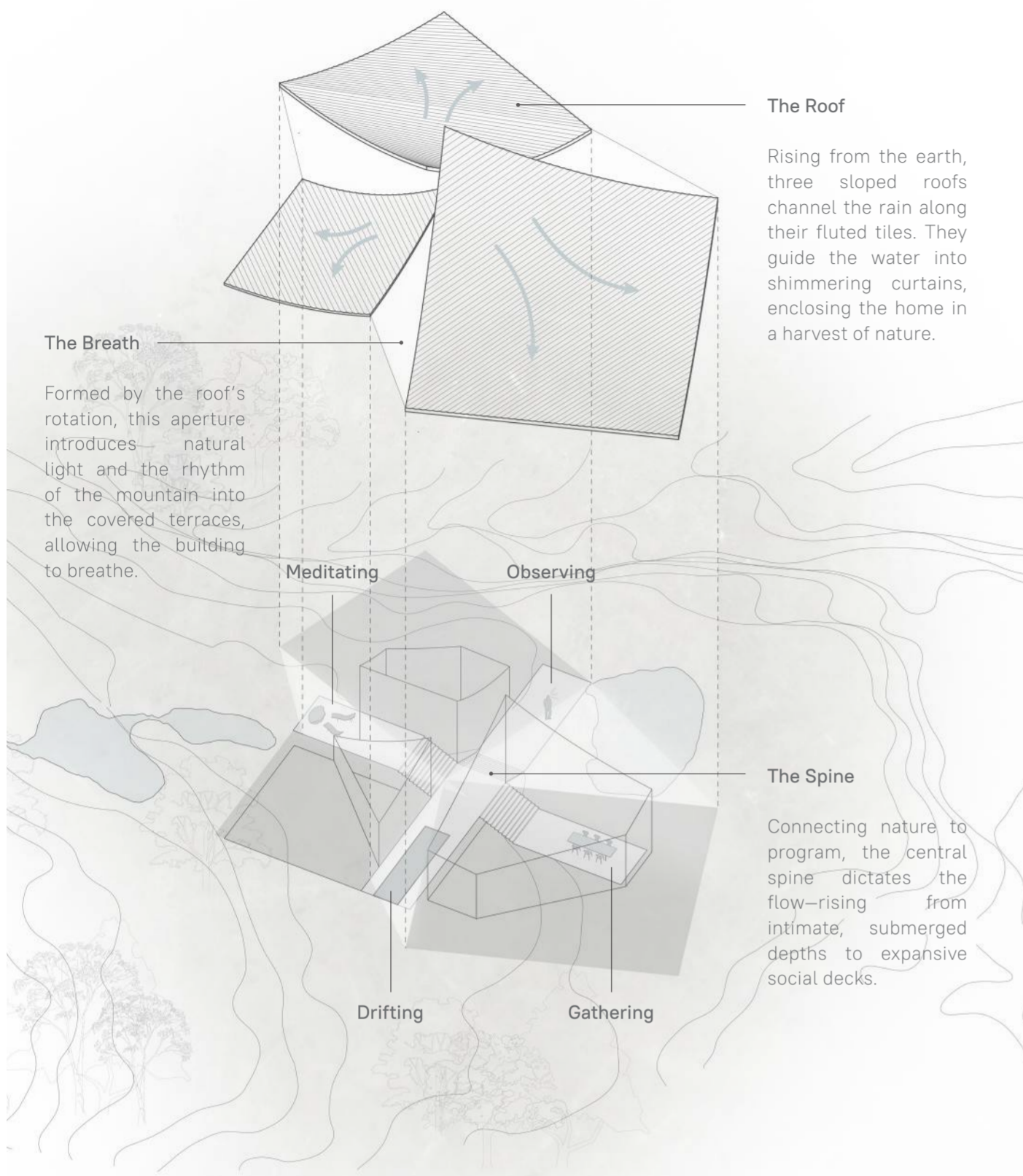
Embedded within the sloping terrain, this house establishes a distinct dialogue with the landscape at

each level. The lower floor is submerged in the density of the surrounding forest, offering an intimate, enclosed experience, while the upper floor emerges to bridge two opposing vistas: the looming mountain peaks behind and the expansive seascape ahead.

The design is driven by massive, sloping roofs that serve a dual function of hydrological performance and visual framing. They channel the island's abundant rainfall into shimmering rain curtains—a visible, moving boundary that separates the interior sanctuary from the wild exterior.



Terrace View From Bedroom II



The Roof

Rising from the earth, three sloped roofs channel the rain along their fluted tiles. They guide the water into shimmering curtains, enclosing the home in a harvest of nature.

The Breath

Formed by the roof's rotation, this aperture introduces natural light and the rhythm of the mountain into the covered terraces, allowing the building to breathe.

The Spine

Connecting nature to program, the central spine dictates the flow—rising from intimate, submerged depths to expansive social decks.

The Mountain

Responding to the topography, the design deconstructs the mountain form into three volumes sheltered by massive sloping roofs. Anchored by monolithic stone bases, the structure channels rainwater along fluted tiles into luminous curtains. The roof geometry generates deliberate gaps, allowing light and rain to punctuate the interior shadows.

a meditative interface connecting ground and sky. Drawing from In Praise of Shadows, the deep eaves form a dense darkness that contrasts with the beams of light piercing the gaps, revealing a profound, shadowy beauty (陰翳 yinyi).

Beneath these intersections lie four distinct sanctuaries: a mountain-facing fire pit, a pool submerged in the forest, an intimate dining room, and an observation deck overlooking the water. These spaces invite the inhabitants to feel the gradational shifts of the wild.

Light cascades onto the terraces of the central spine,

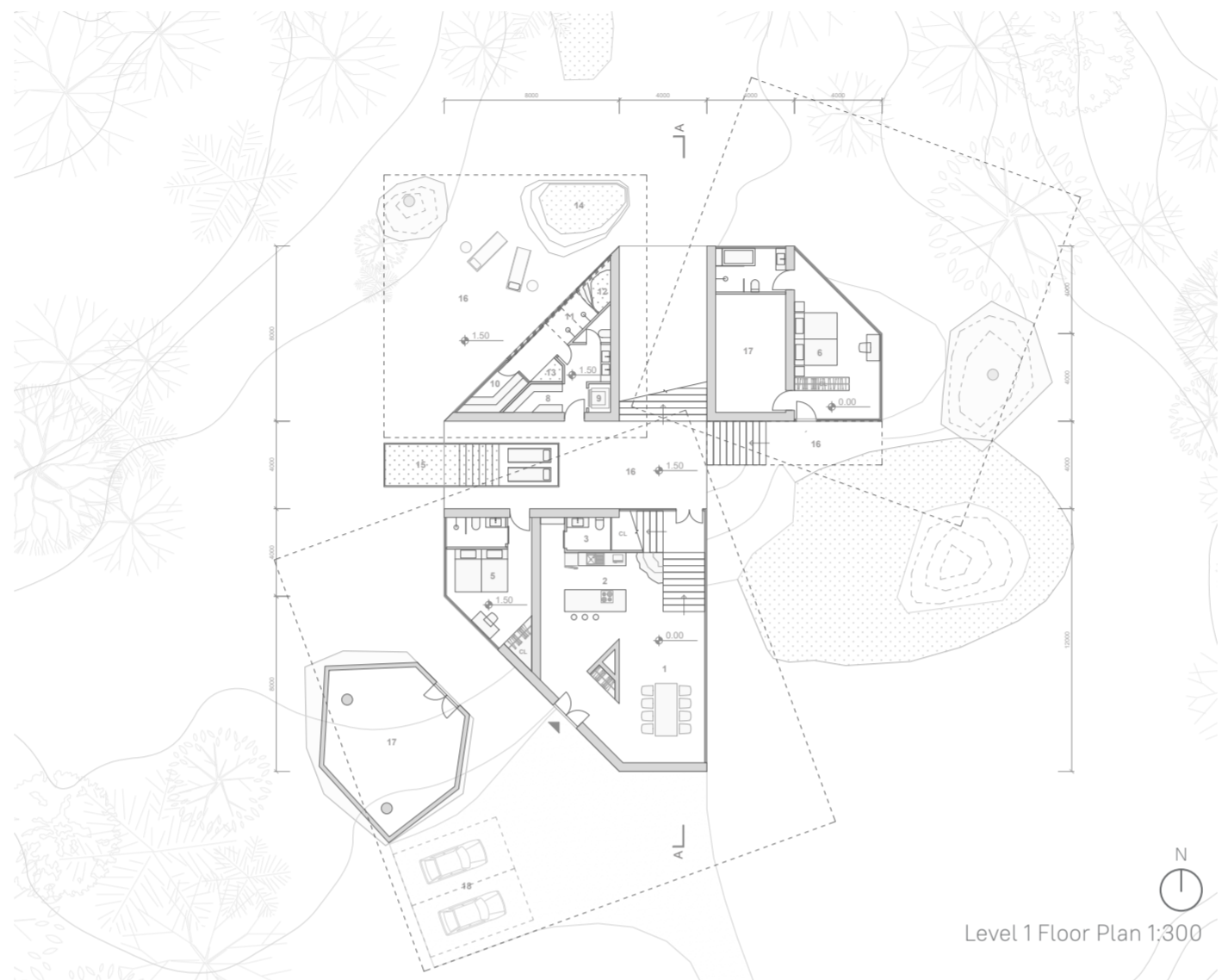
The Spine

More than a corridor, the central spine choreographs a transitional experience that weaves between the interior and the exterior, deepening the connection to nature.

The dining and kitchen areas dissolve into the dense forest texture through panoramic glazing. Along the spine, one ascends to the living room's ocean horizon,

or directs to the river-edge bathing sanctuary, where the sound of flowing water guides introspection.

The layout isolates the bedrooms as distinct retreats. Each functions as an enclosed sanctuary while enforcing a constant dialogue with nature. Stepping out of a private suite means stepping immediately onto the spine's terrace—ensuring that nature is not just viewed, but physically traversed in daily life.

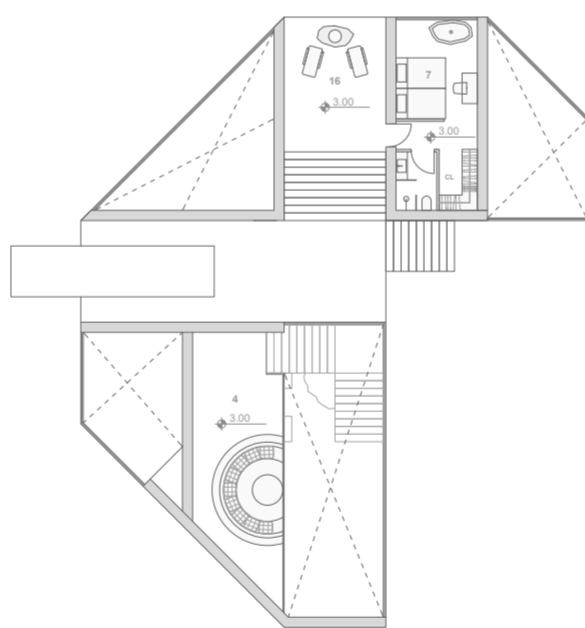


Level 1 Floor Plan 1:300

Total Construction ---- 521 sqm

Total Floor Area ----- 251 sqm
 Kitchen & Dining ----- 85 sqm
 Living Room ----- 40 sqm
 Bath ----- 32 sqm
 Bedroom I ----- 30 sqm
 Bedroom II ----- 32 sqm
 Bedroom III ----- 32 sqm

Outdoor Equipment --- 70 sqm
 Outdoor Terrace ----- 200 sqm



1. Dining Room
2. Kitchen
3. Powder Room
4. Living Room
5. Bedroom I
6. Bedroom II
7. Bedroom III
8. Changing Room
9. Laundry
10. Sauna
11. Shower
12. Hot Bath
13. Cold Plunge
14. Outdoor Bath
15. Swimming Pool
16. Terrace
17. Equipment Room
18. Parking

Level 2 Floor Plan 1:300



Exterior View From The East



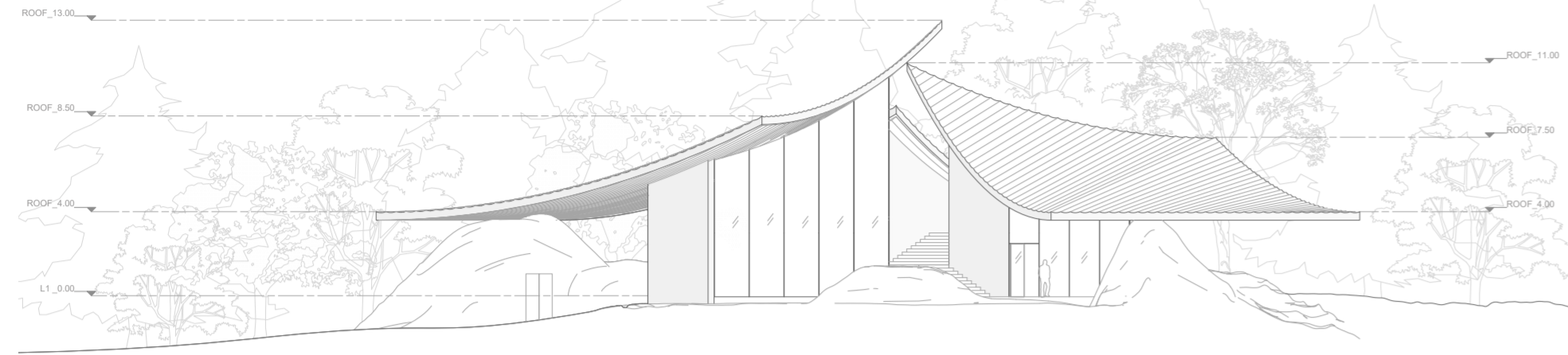
Living Room Looking Toward The Sea



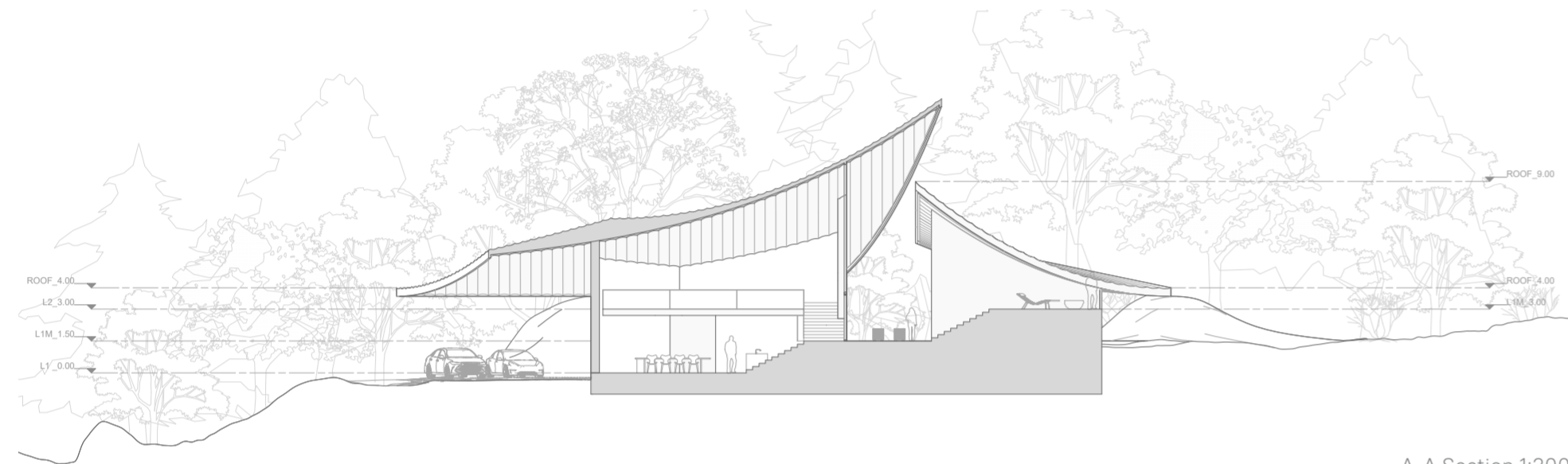
Dining Room Looking Toward The Mountain

The Unfolding

The gradual elevation shift—from +0.0 to +1.5 and +3.0—transforms the vertical circulation into a sensory journey. This gentle rise serves as a transition between exposure and enclosure, turning the act of moving through the house into a curated dialogue with the surrounding mountain.



South Elevation 1:300



A-A Section 1:300

The Sense

Inhabiting the “Echo of the Mountain” is a continuous dialogue with nature. From the dining space to the sleeping suites, the design amplifies every sense: seeing the framed mountain and water, smelling the damp soil, feeling the texture of the forest, and listening to the rainfall.

The materials embody this connection. Vertically veined concrete and hammered metal mimic the patterns of falling rain and standing water. The exterior material resists the wild climate, contrasting with an interior lined in warm, locally sourced timber and stone to cultivate intimacy.

The sloped roofs channel water along fluted metal tiles to create shimmering curtains, transforming the downpour into a visual spectacle. Simultaneously, the roof acts as an instrument. The metal surface amplifies the sound of the storm, turning the rain's impact into a rhythmic acoustic experience, embracing the island's dynamic weather rather than shutting it out.

In this sanctuary, the design transcends mere shelter to become a medium of connection. It captures the island's pulse—transforming the chaotic noise of the elements into a meditative backdrop. The architecture filters the raw intensity of the climate into a habitable rhythm, allowing the dweller to find a deep stillness within the center of the forest. Here, the simple act of living becomes a profound communion with the mountain, tuned to the eternal cycle of the rain.



Bedroom III



Swimming Pool View From The West



Open-Air Bath, Shower & Hot Bath