

# THE DRAGON'S BREEZE

Convergence of Nature and Form in Yakushima

## Concept and Site Integration

The image of the Dragon (Ryū), the ancient protector of the forest, comes to life through the architectural language of the structure. The building originates from the depths of the forest like the branches of a river, meandering toward the ocean. Yakushima's vertical ecosystem—stretching from coral reefs to snowy peaks—defines the project's primary axis. This line of tension between the mountain and the sea forms the main spine of the building. The water-related units (SPA and pool) cling to the earth and orient toward the mountains, while the main living area rises above the rocks like the head of a dragon, locking onto the ocean horizon. Residential units are positioned along the east-west axis as dynamic protrusions, focusing on various forest layers and shifting light angles.



Site Plan 1:750



*Shaped by the spirit of the dragon (Ryū), the forest's protector, the building flows like a river through the trees, merging into a singular path toward the ocean.*

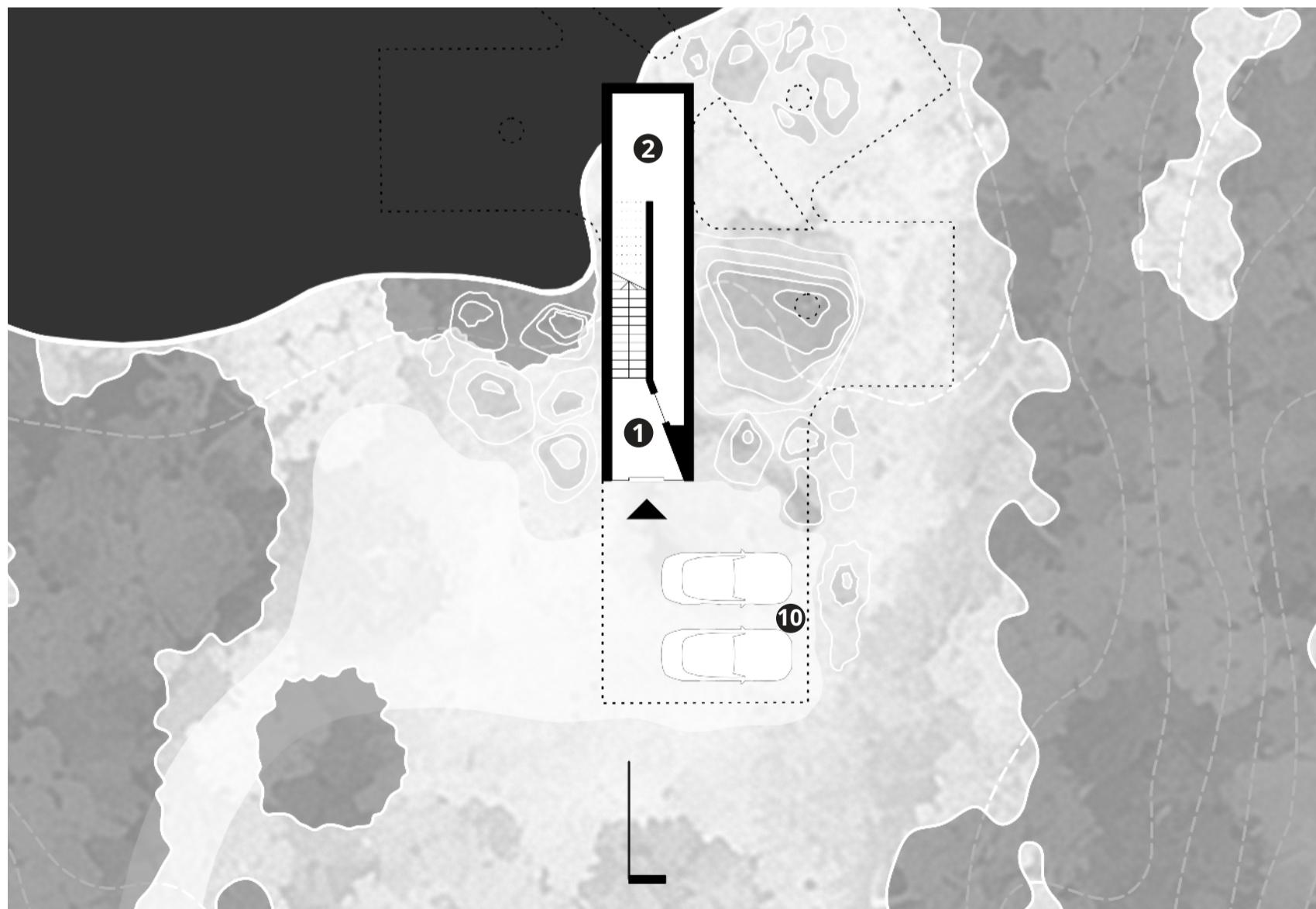




### Minimal Site Intervention and Hybrid Structure

To preserve Yakushima's delicate ecosystem, the building is situated with minimal contact with the ground. Existing rocks are envisioned not merely as visual elements but as natural foundations integrated into the structural system. In line with this approach, the building is elevated via a hybrid system resting on natural stones, reinforced concrete shear walls, and isolated footings. Through this elevation, the natural ground flora, faunal migration paths, and water flow remain uninterrupted.

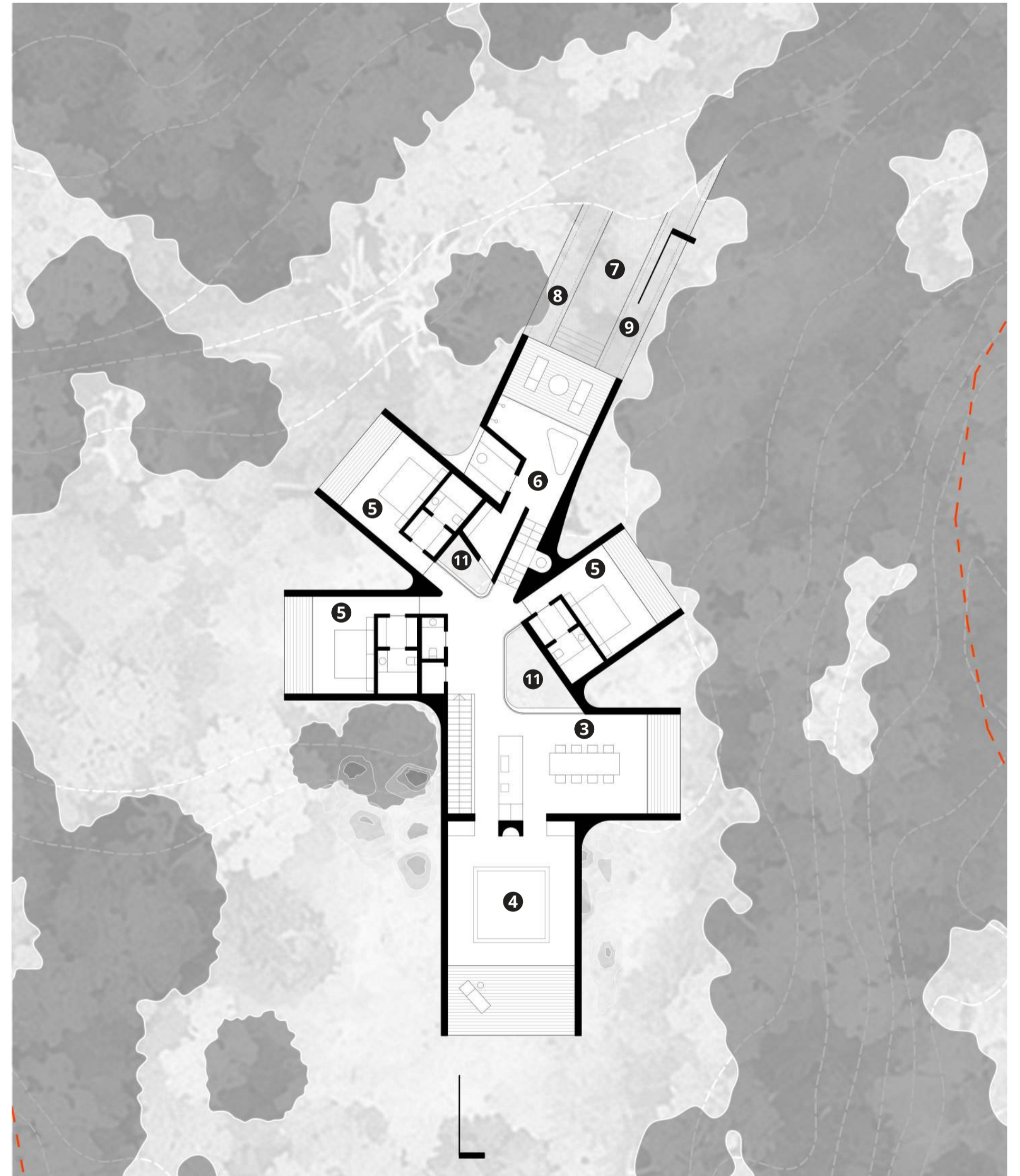
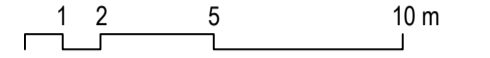
The building's primary skeleton is an integrated volumetric structure with a steel space-frame system, allowing for expansive cantilevers and dynamic mass movements. While the main cantilever extending toward the ocean is supported by reinforced concrete shear walls surrounding the entrance staircase, the pool and sauna units penetrate the sloped topography to establish structural integrity with the land. This structural solution allows the building to graft onto the ocean horizon from above the existing tree canopy.



Basement Floor Plan 1:200

- 1 Entrance
- 2 Storage Area
- 3 Kitchen - Dining room
- 4 Living Room
- 5 Bedrooms
- 6 Bathroom - Sauna
- 7 Pool
- 8 Cold plunge
- 9 Hot tub
- 10 Parking Area
- 11 Inner courtyard

Basement Floor Area	42 m <sup>2</sup>
Basement Floor Construction Area	42 m <sup>2</sup>
Ground Floor Area	257 m <sup>2</sup>
Ground Floor Construction Area	406 m <sup>2</sup>
Total Floor Area	299 m <sup>2</sup>
Total Construction Area	448 m <sup>2</sup>

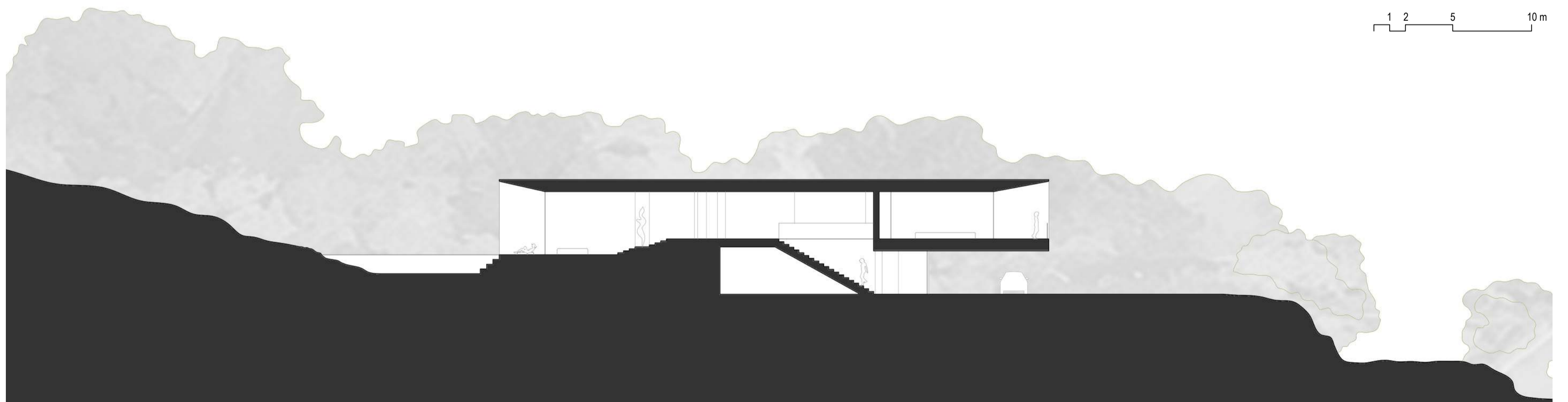
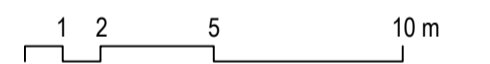


Ground Floor Plan 1:200

### Materiality and Atmosphere: From "Stranger" to "Native"

The Corten steel cladding the exterior may initially appear as a "stranger" to the environment; however, it transforms over time under the island's intense humidity and rainfall. The oxidation and moss-growth process, ranging from deep browns to greenish hues, reconciles the building's identity with the forest.

In contrast to the exterior shell, the interiors are dominated by a warm and serene wooden texture. Exposed concrete used for the basement walls, the staircase, and the main floor slab provides a minimalist backdrop for this material palette. Expansive glass surfaces dissolve the boundaries between mountain, sea, and forest, ensuring spatial permeability. From the first step at the entrance to the tranquility of the pool, the raw hardness of concrete, the warmth of wood, and the evolving character of Corten offer a balanced material synergy.



Section 1:200