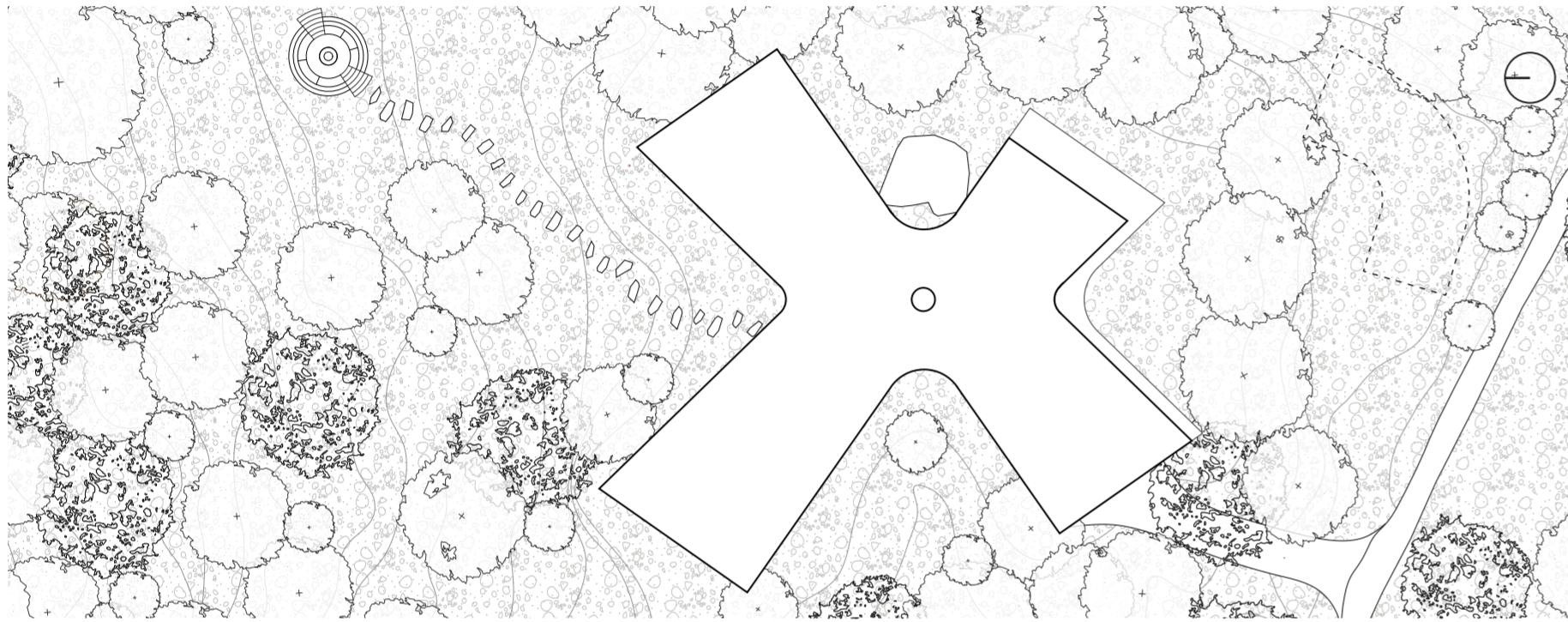


The project is born from an intimate dialogue with its site, slipping into the voids left among the trees, along the gentle curves of a mild slope—turned on one side toward the mountains and on the other toward the ocean. Not only is the landscape intimate, yet simultaneously open, but it is also in constant transformation, continuously renewed by abundant rainfall, which nourishes the vegetation, animates the earth, and shapes the atmosphere of the place. The nature of the site thus becomes the guiding force of the entire design, which conceives architecture as a discreet and respectful guest—capable of flowing into the voids among the trees and cultivating a continuous, fluid dialogue between nature and building.

The house is thus articulated into two volumes, two wings, brought together under the same roof, flanking the natural features of the site and embracing, in a perpetual gesture, the mountains, the forests, and the waters of the ocean. A house in between, a point of convergence, a node of union between two distinct outlooks of the island, which find their synthesis at the centre, in the very fulcrum of the architecture. Here lies a silent rock—a sleeping neighbour that emerges from the earth, while a gentle waterfall murmurs and flows, entering the architecture as an audible, living presence. A node-house, capable of celebrating the eternal rhythm of the island's landscape.



\_Project site plan | Scale 1:500 | Yakushima Island, Japan





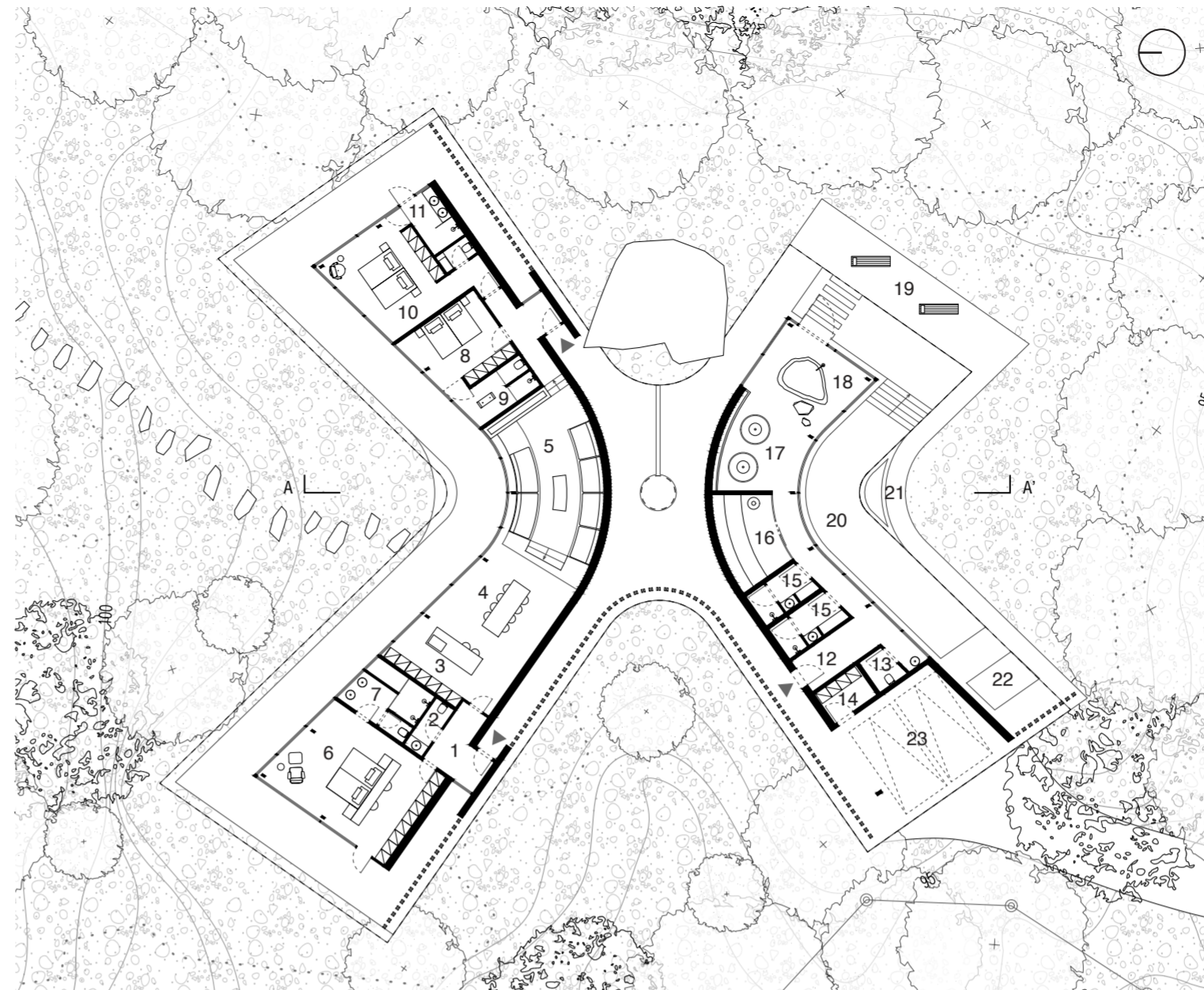
\_Exterior view

**ENVIRONMENT**

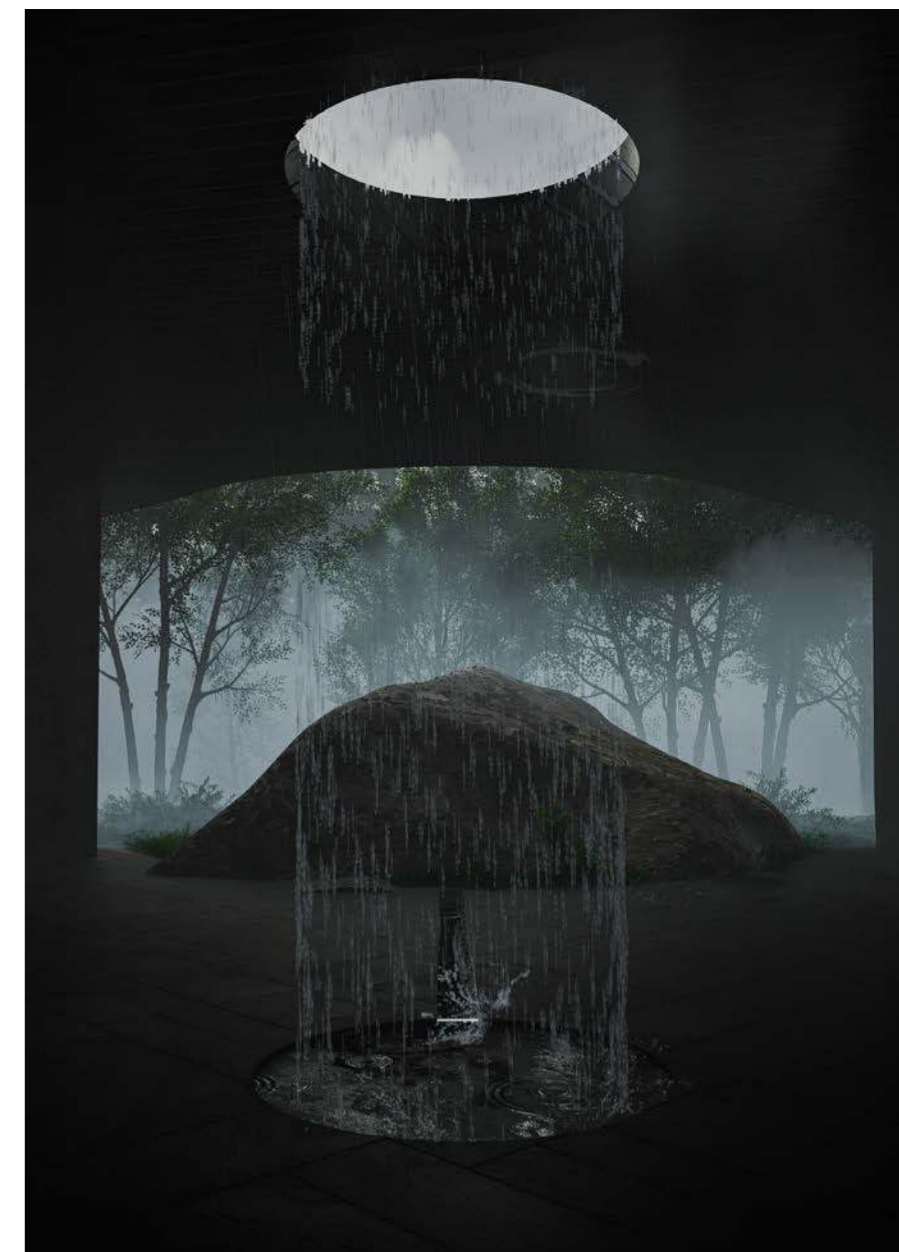
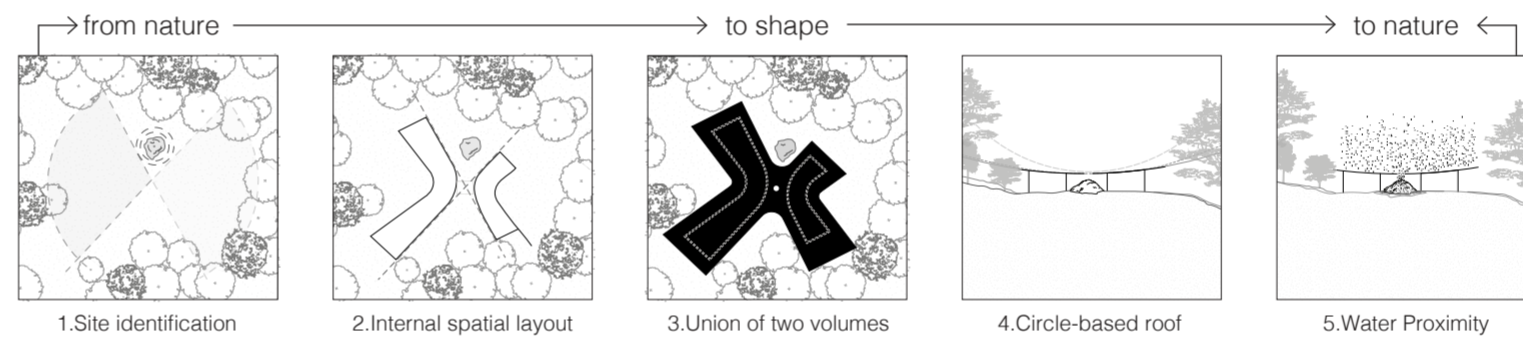
From this perpetual embrace unfolds a continuous dialogue between building and landscape, and when it opens most generously, the volumes themselves give way to full-height windows, dissolving the boundary between the inside-out. The house thus gently turns its more private spaces toward the quiet intimacy of the mountains, while the shared areas - the spa - reach outward, opening themselves to the restless waters of the ocean. The elevations facing the rock remain opaque. Two masonry walls safeguard the intimacy of the entrances, reinforce the connection of the two wings with their respective outlooks, and guide the gaze toward the center, toward that poetic union between earth and water, between mountains and ocean.

**LAYOUT** [Exterior area: 381 m<sup>2</sup>] [Interior area: 300 m<sup>2</sup>]

- |  |                                 |                                     |
|--|---------------------------------|-------------------------------------|
| Living room (104 m <sup>2</sup> )      | Guest room (34m <sup>2</sup> )  | 15 Changing room                    |
| 1 Entrance hall                        | 8 Bedroom                       | 16 Sauna room                       |
| 2 Guest bathroom                       | 9 Bathroom                      | 17 Salt scrub showers               |
| 3 Kitchen                              | Guest room (23 m <sup>2</sup> ) | 18 Stone hot bath                   |
| 4 Dining area                          | 10 Bedroom                      | <b>Exterior (381 m<sup>2</sup>)</b> |
| 5 Living room                          | 11 Bathroom                     | 19 Outdoor terrace                  |
| <b>Master suite (49 m<sup>2</sup>)</b> | Spa (90 m <sup>2</sup> )        | 20 Pool                             |
| 6 Bedroom                              | 12 Entrance hall                | 21 Fireplace                        |
| 7 Bathroom                             | 13 Bathroom                     | 22 Outdoor cold bath                |
|  | 14 Storage                      | 23 Covered parking                  |



\_Ground floor plan | Scala 1:300



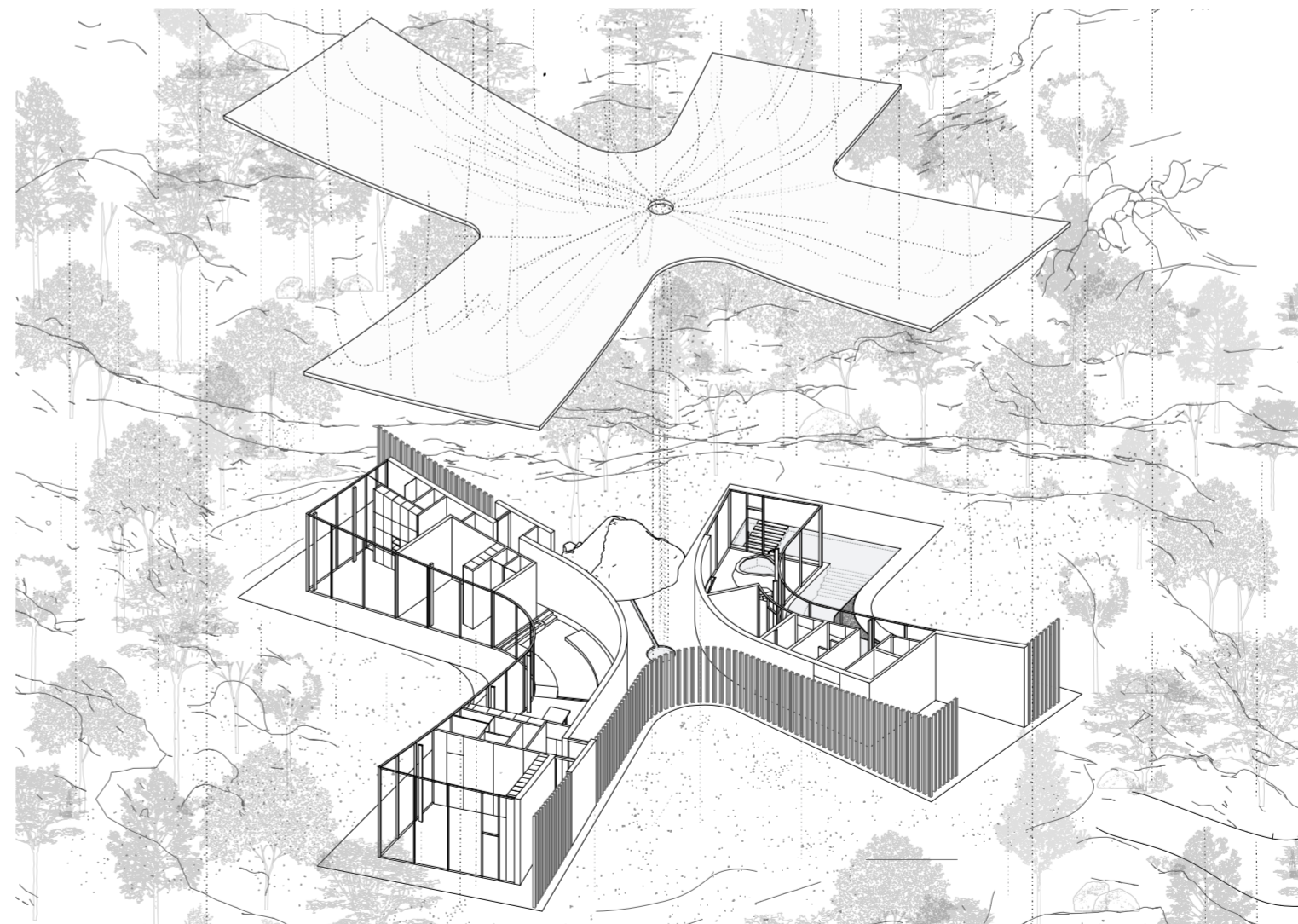
\_Natural rainwater waterfall.

**RAINWATER**

The openness toward the landscape is further expressed through the roof, whose shape is drawn geometrically from the projection of its perimeter into a wide-radius sphere, later carved at its base. Its gentle curvature follows the slope of the terrain, underlining it, accompanying it, and in some places seeming to almost caress it without ever touching, guiding the rain softly toward the centre. Here, a circular opening gathers rainwater - welcoming it in rather than draining it away-letting it flow from the roof in a soft, delicate waterfall, becoming, like the earth and the stone, a living presence woven into the very fabric of the architecture.



\_Outdoor view from the spa and pool area



\_ Axonometric exploded view and the relationship between architecture and water.



\_Exterior view of the living room and master suite.



\_Interior view of the spa.

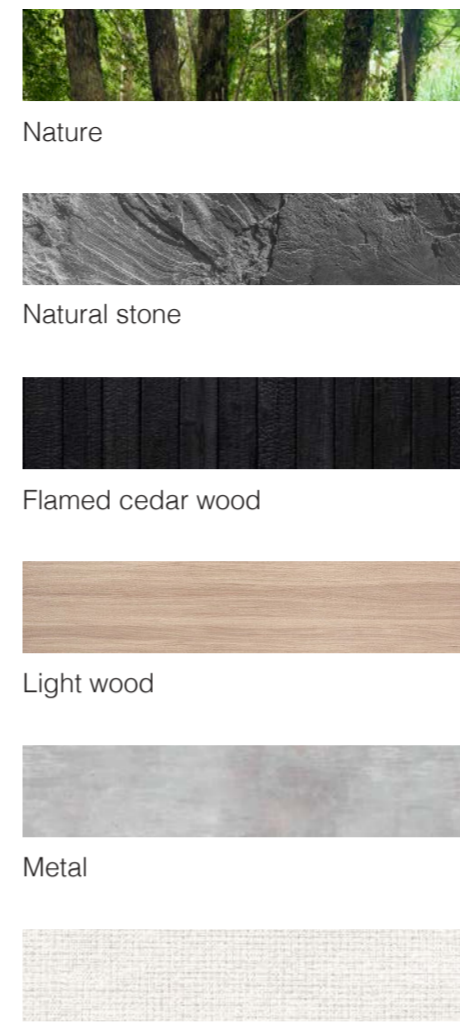
**INTERIORS**

The interior seeks to achieve a delicate balance, merging traditional Japanese sensibility with contemporary design elements to create an evocative experience that resonates equally with the heritage of the past and the language of modernity. The stone is celebrated for its rough texture and amplifies the

tactile richness of the space. It firstly finds its place in the spa, where it emerges as one of the two protagonists, alongside with its natural companion, water. From floors to walls, the stone is carved and shaped until it becomes a warm water basin, accompanied by its sister rock, re-



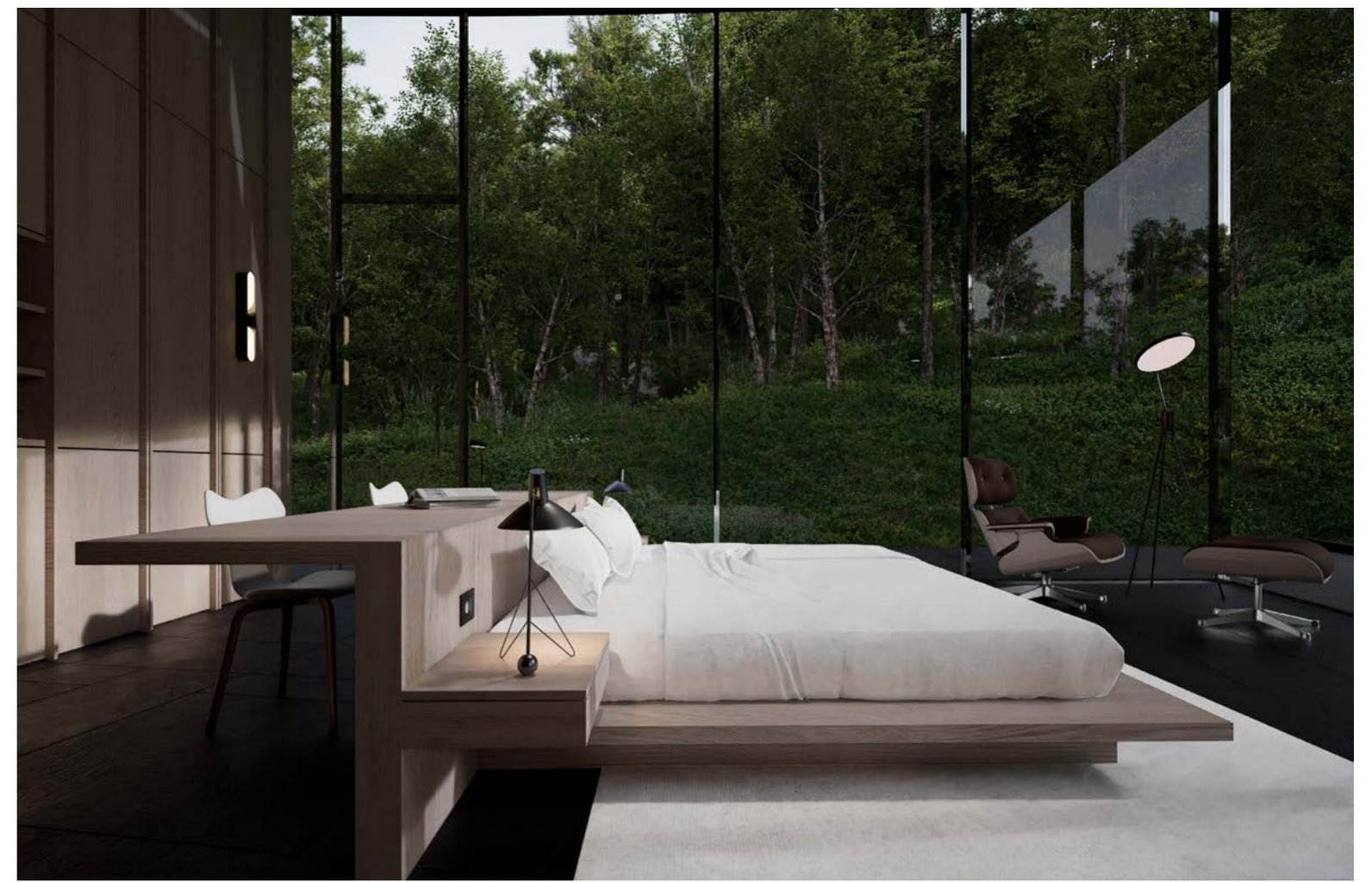
\_Interior view of the master suite bathroom.



Light fabrics



\_Interior view of the dining area.



\_Interior view of the master bedroom.

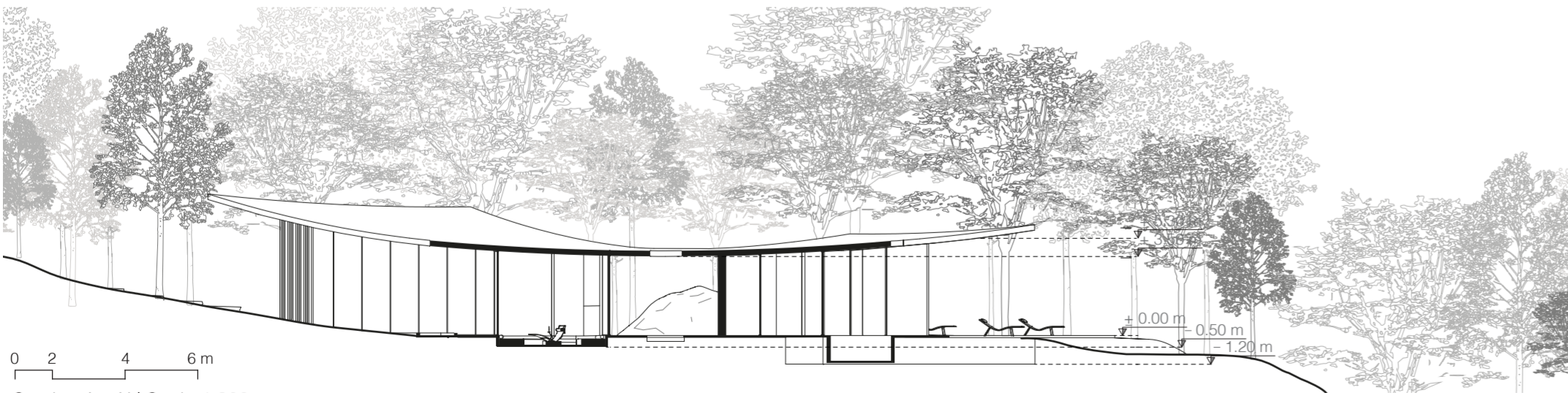


\_Interior view of the living area.

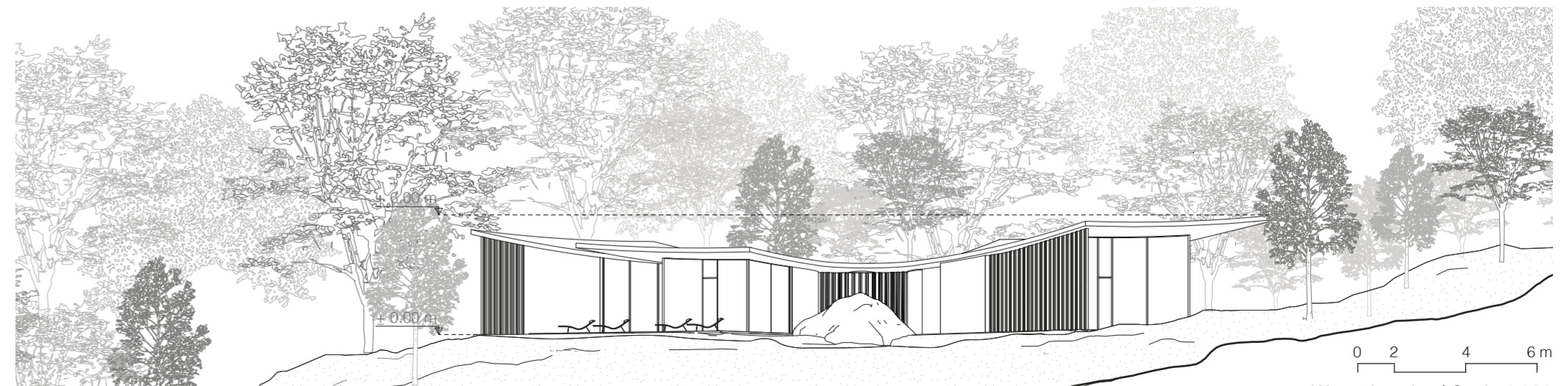
sting silently nearby. Moreover, in the bathrooms of the larger unit, stone helps define tall, narrow spaces that converge and guide the gaze toward framed views of the surrounding landscape, establishing an intimate dialogue with nature. This material extends in the interior spaces, pairing with wood, to permeate the atmosphere with a sense of intimacy and warmth, recalling the welcoming comfort of traditional homes.

As a floor, a singular surface, it unites the two wings and the surrounding areas on a continuous ground plane, weaving a network of nodes that connects the circulation paths throughout the house. The flooring extends as well beyond the limits of the individual units, creating a continuous convergence of pathways

that guide occupants to unfolding experiences along the way. By treating these elements as integral components of the design, the interior unfolds as a direct extension of the landscape. A permeable architecture that allows the surrounding environment to become a tangible and aesthetic presence within the home.



\_Section A - A' | Scale 1:300



\_West elevation | Scale 1:300