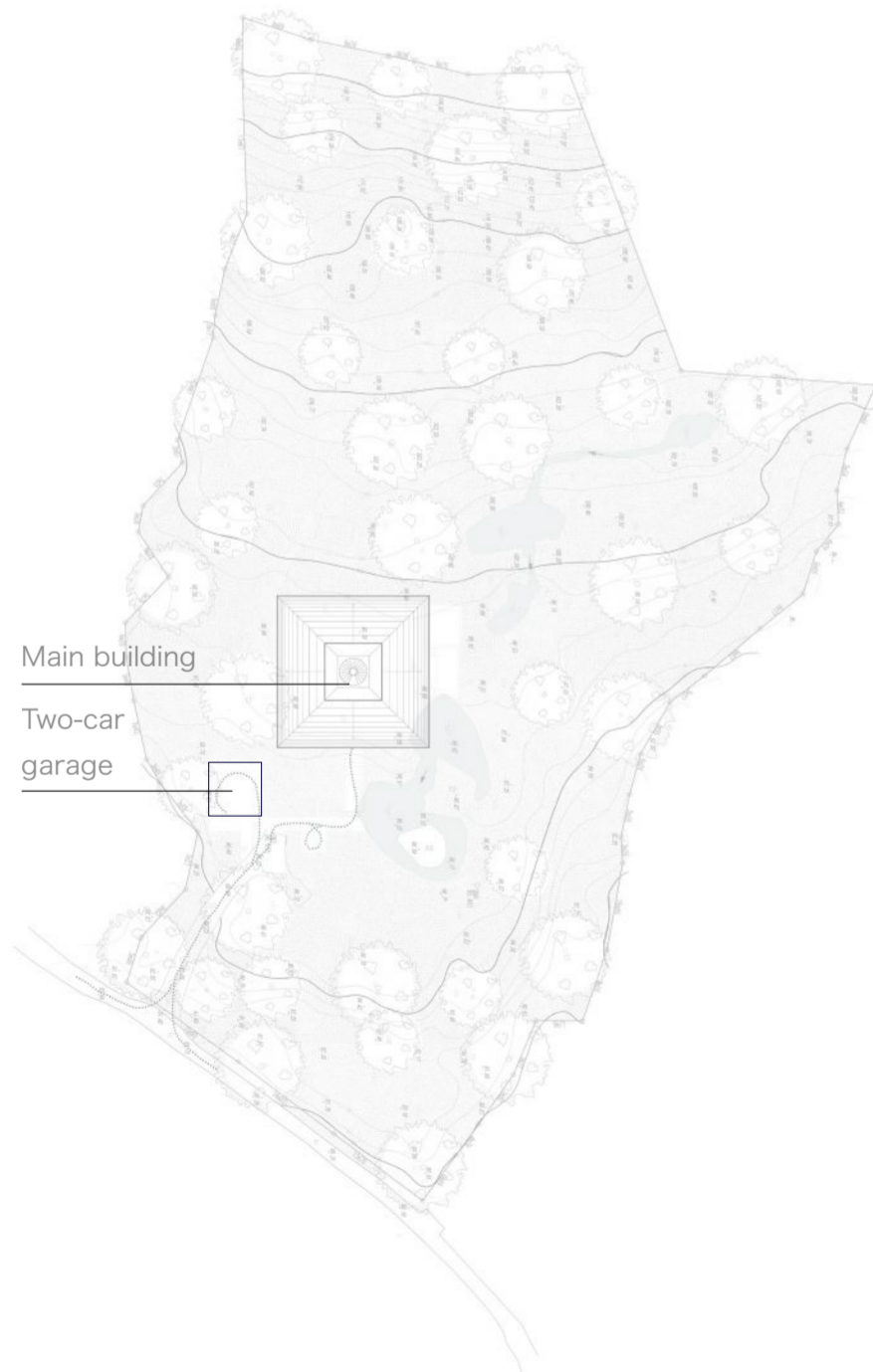
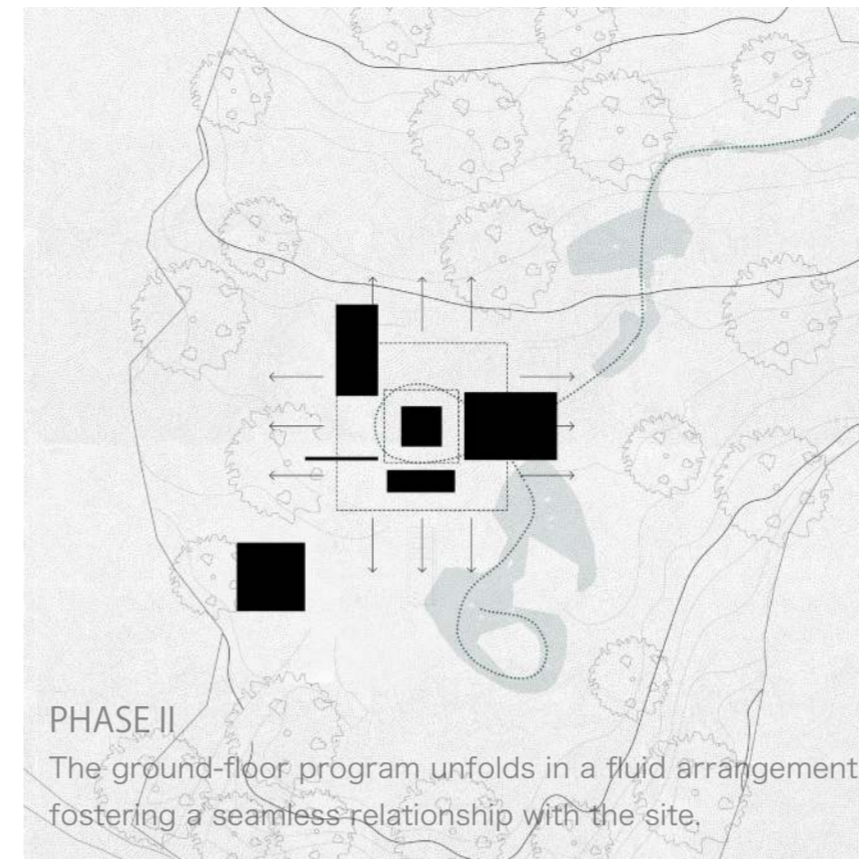
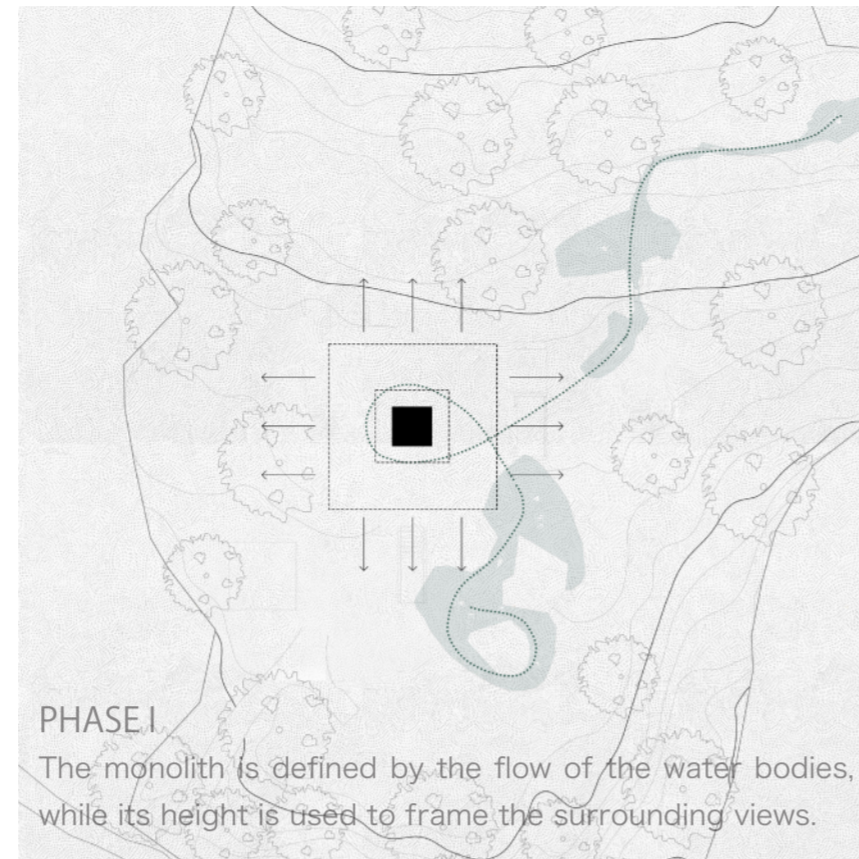


A CRAFTED SHELTER

IN YAKUSHIMA / NOT A HOTEL

Yakushima is not a landscape to be observed from a distance, but a living system to be entered. Defined by constant rainfall, dense forests, and a deep geological presence, the island reveals itself through time, sound, and materiality rather than form. In this context, architecture cannot be imposed; it must emerge, adapt, and coexist. The project is conceived as an extension of the terrain itself. It rises from a stone base that grows naturally from the topography, echoing the large rocks that surface throughout the island. This stone plinth anchors the building to the ground, receiving both the inhabited program and a central vertical core that organizes the spatial experience. Rather than being placed on the site, the architecture appears as something already present, slowly revealed. Natural water flows across the site play a fundamental role in shaping the project.



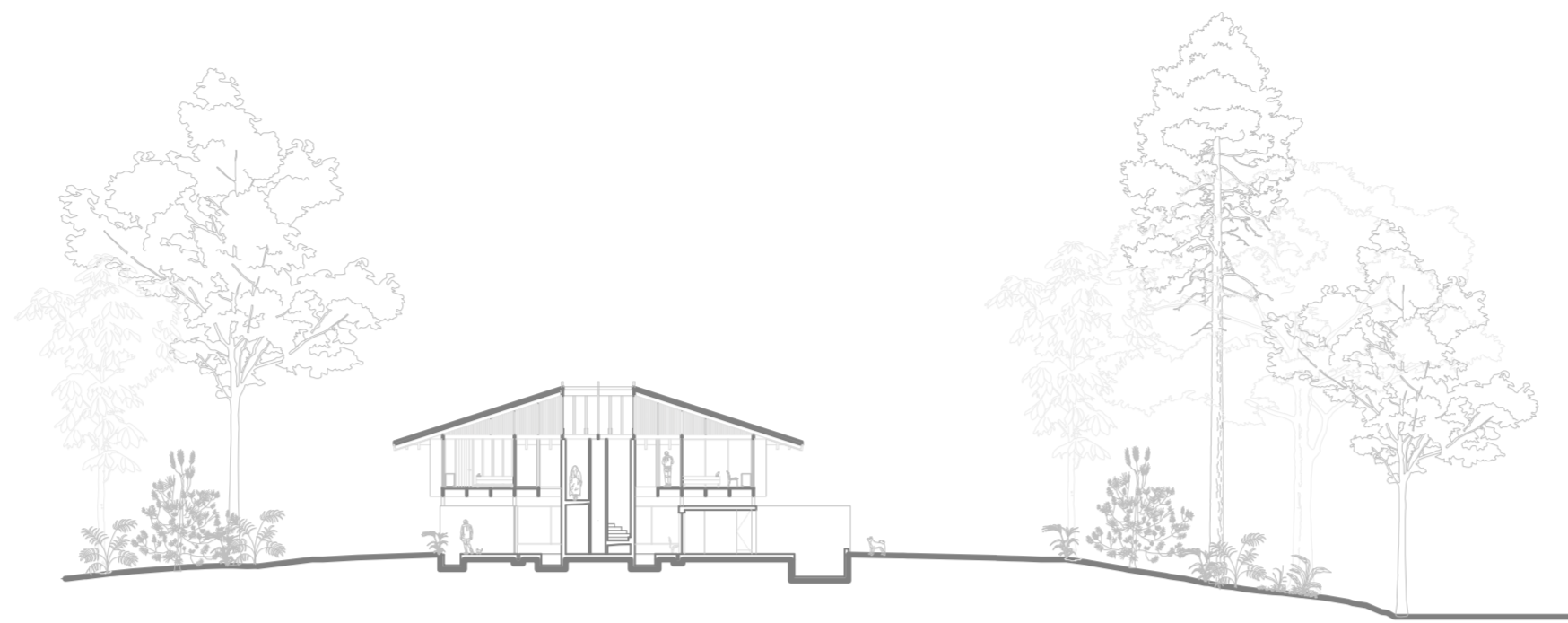
📍 Site plan
 construction building area 616.20 m2
 2 10 20

At the heart of the project, a monolithic stone core defines both structure and experience. Conceived as a closed, weight-bearing element, it acts as the architectural backbone of the building. Within it, a circular stair guides a slow vertical journey, transforming circulation into a moment of transition. A soft zenithal light enters from above, filtering down through the core and subtly shifting the atmosphere between levels, accompanying the user through changes in scale, light, and mood.

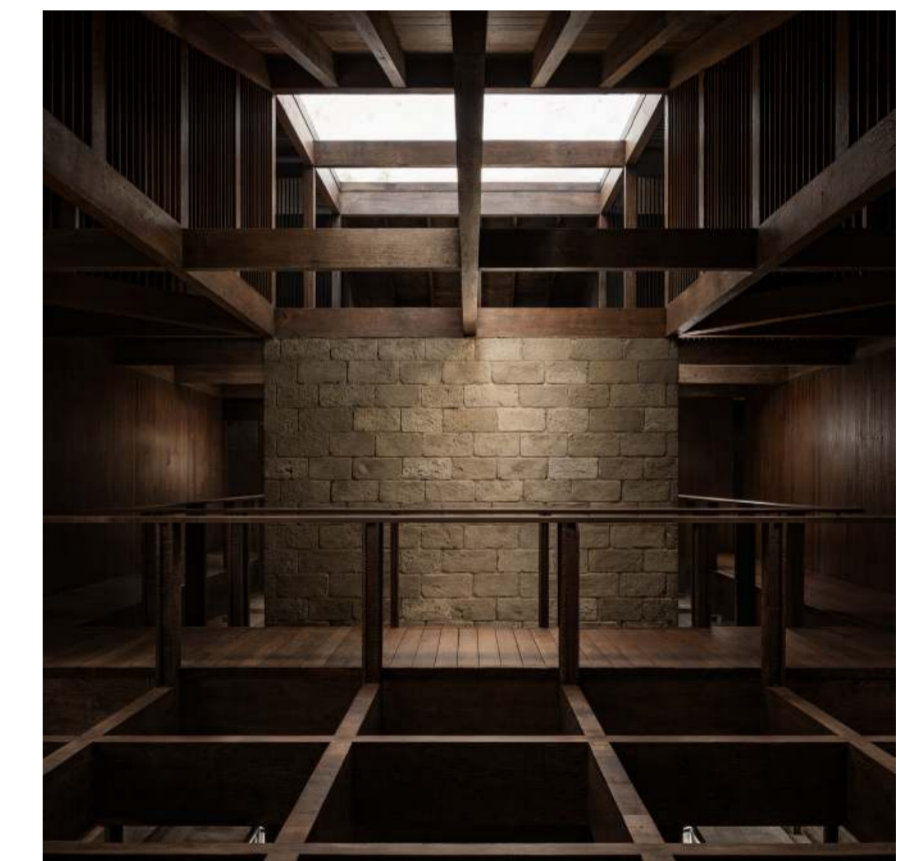
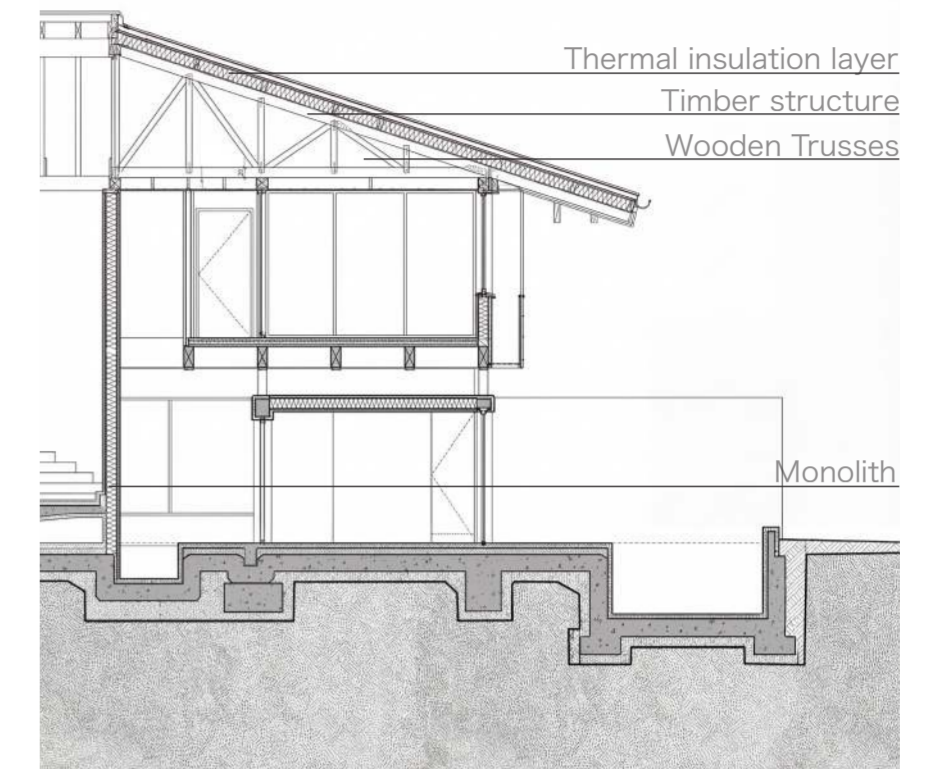
Area Summary.

Ground floor.	241.00 m2
Ground floor outdoor spaces.	156.50 m2
First floor.	218.70 m2
Number of stories.	2
Building Height.	9.00 m

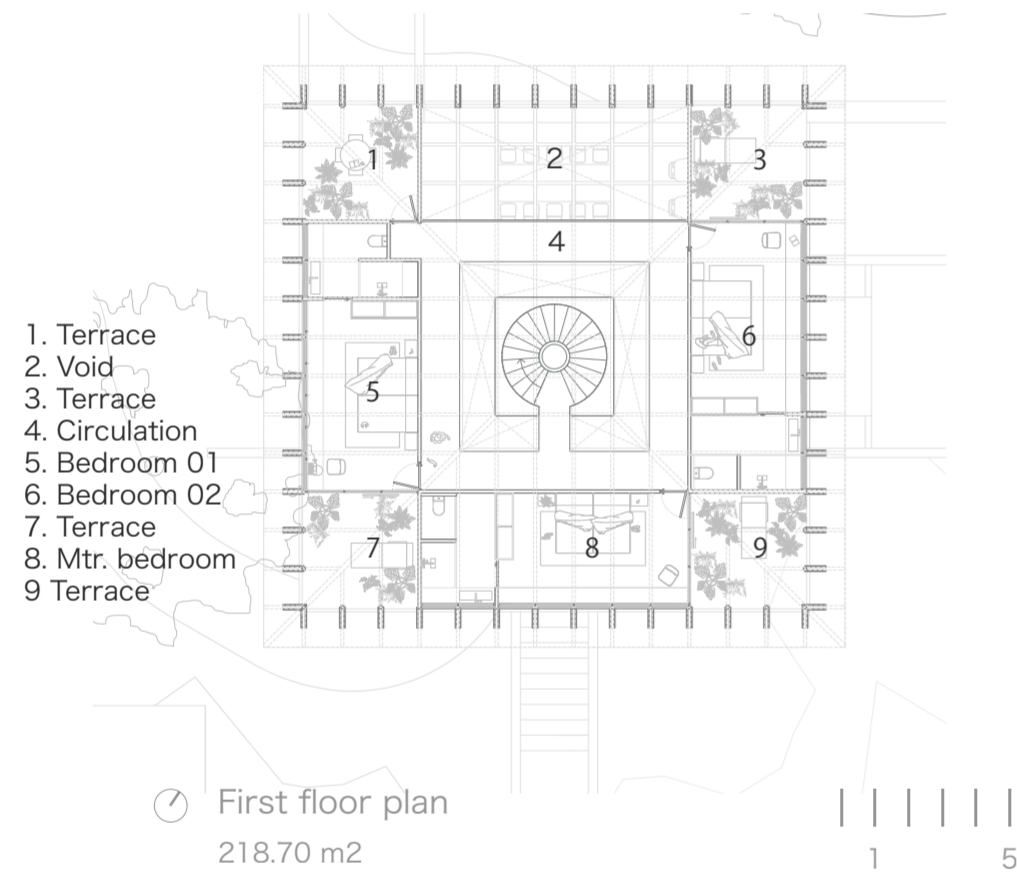
Total construction building area. 616.20 m2



Transverse section



Structure + Monolith



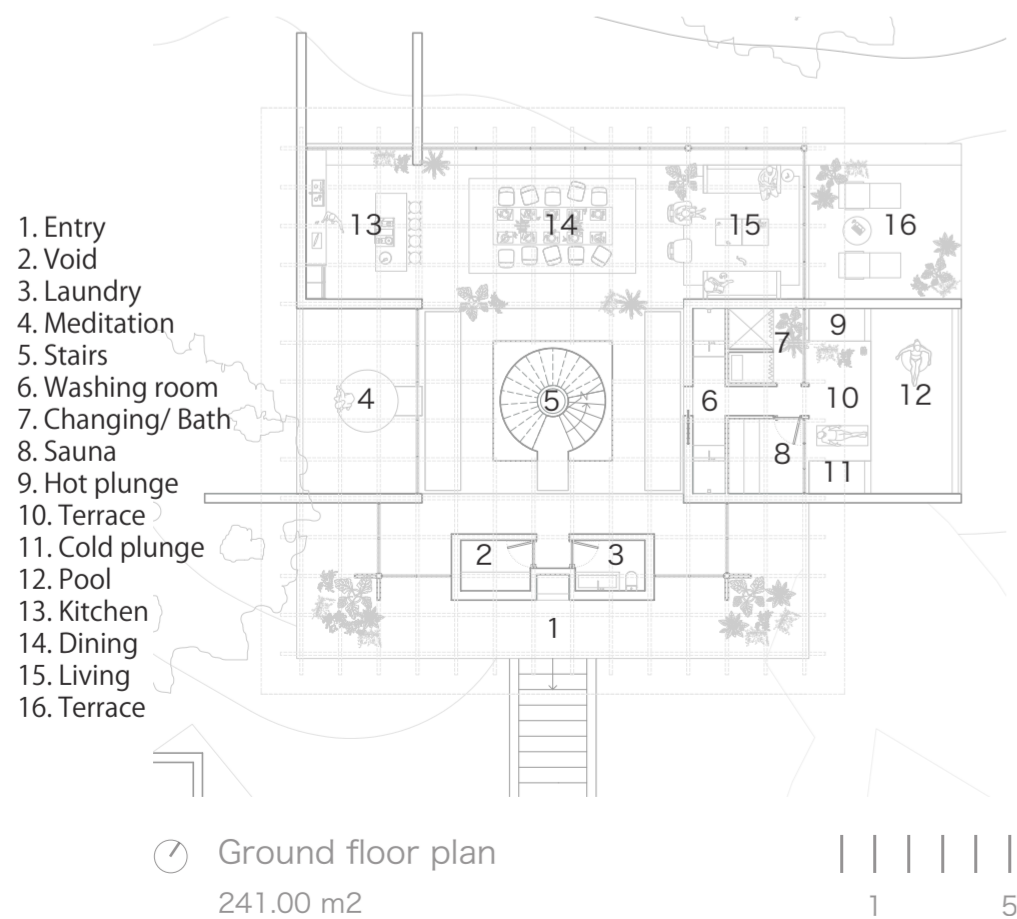
First floor plan
218.70 m2



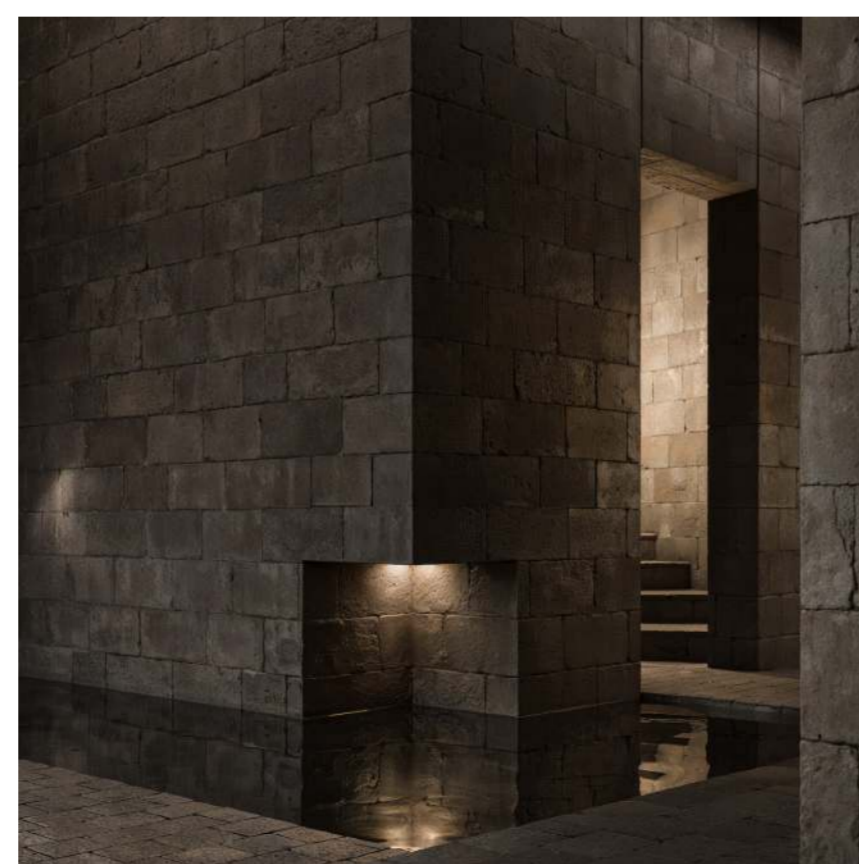
Bedroom side view



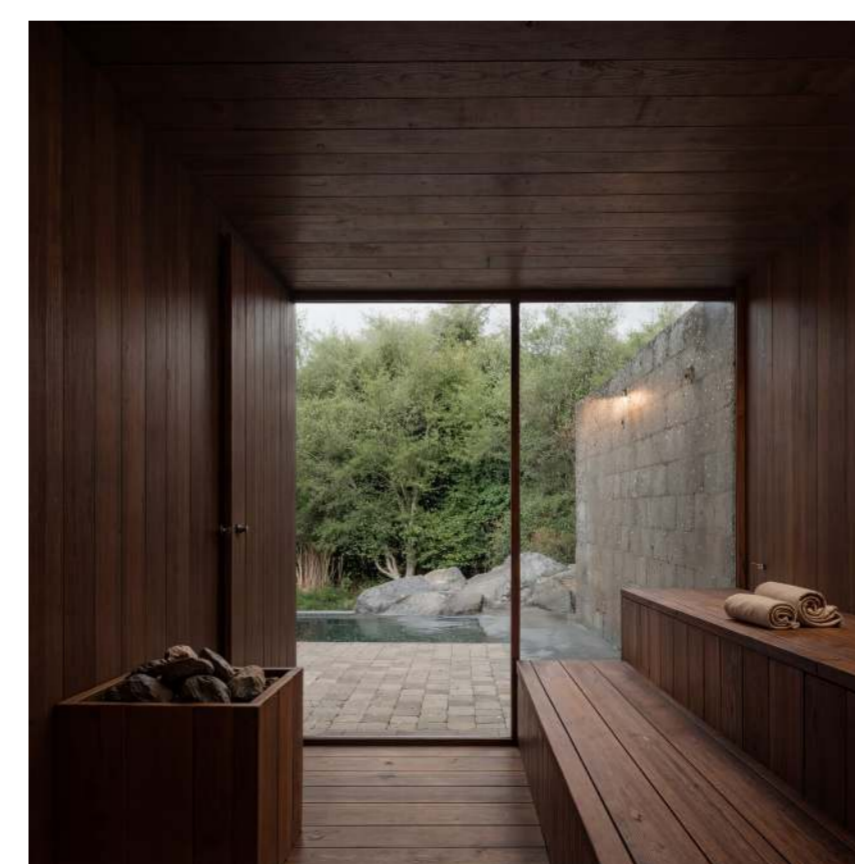
Bedroom front view



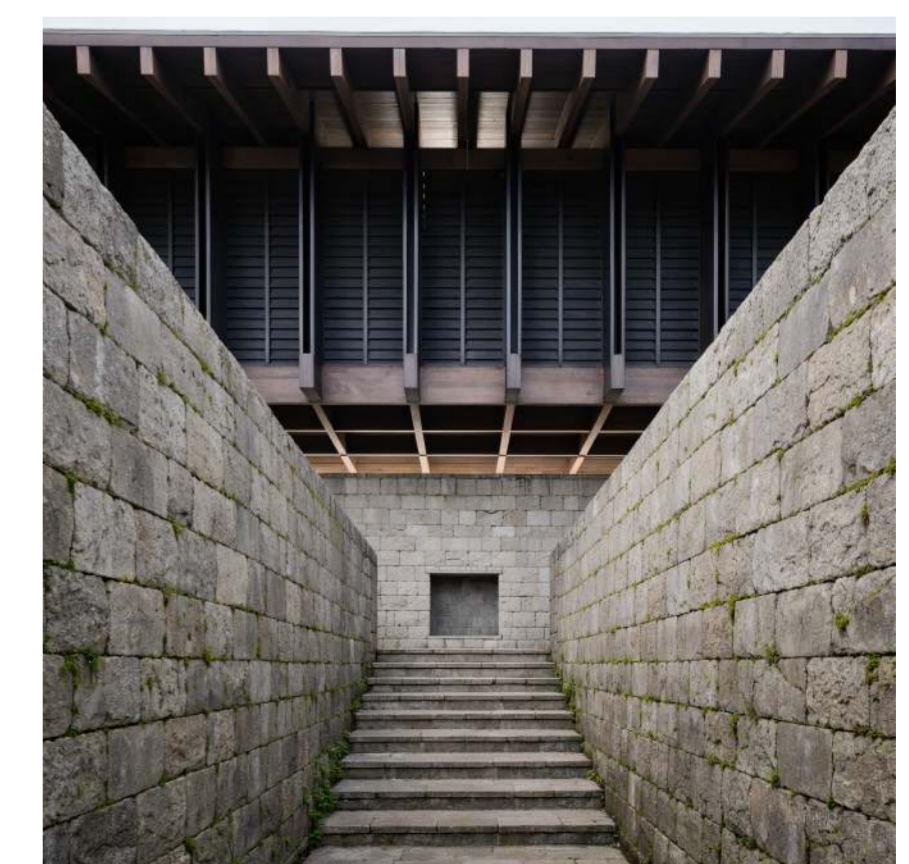
Ground floor plan
241.00 m2



Monolith

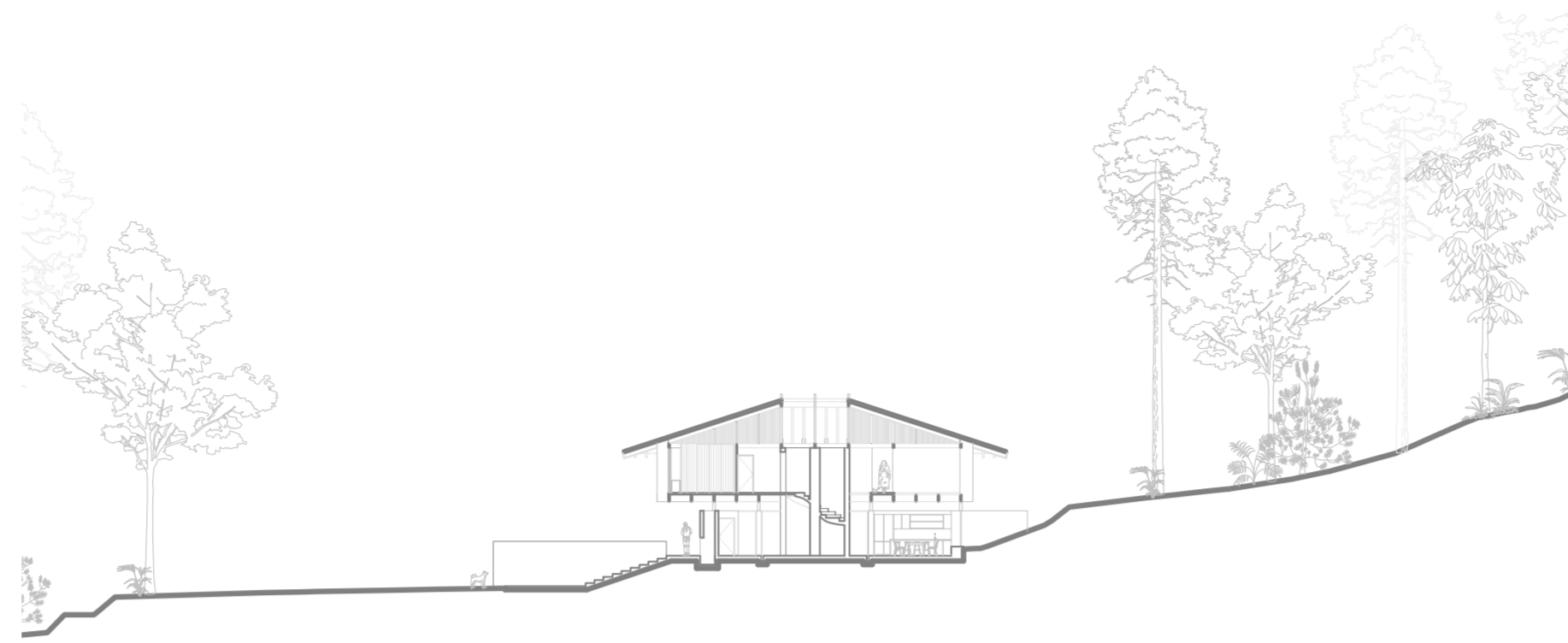


Sauna

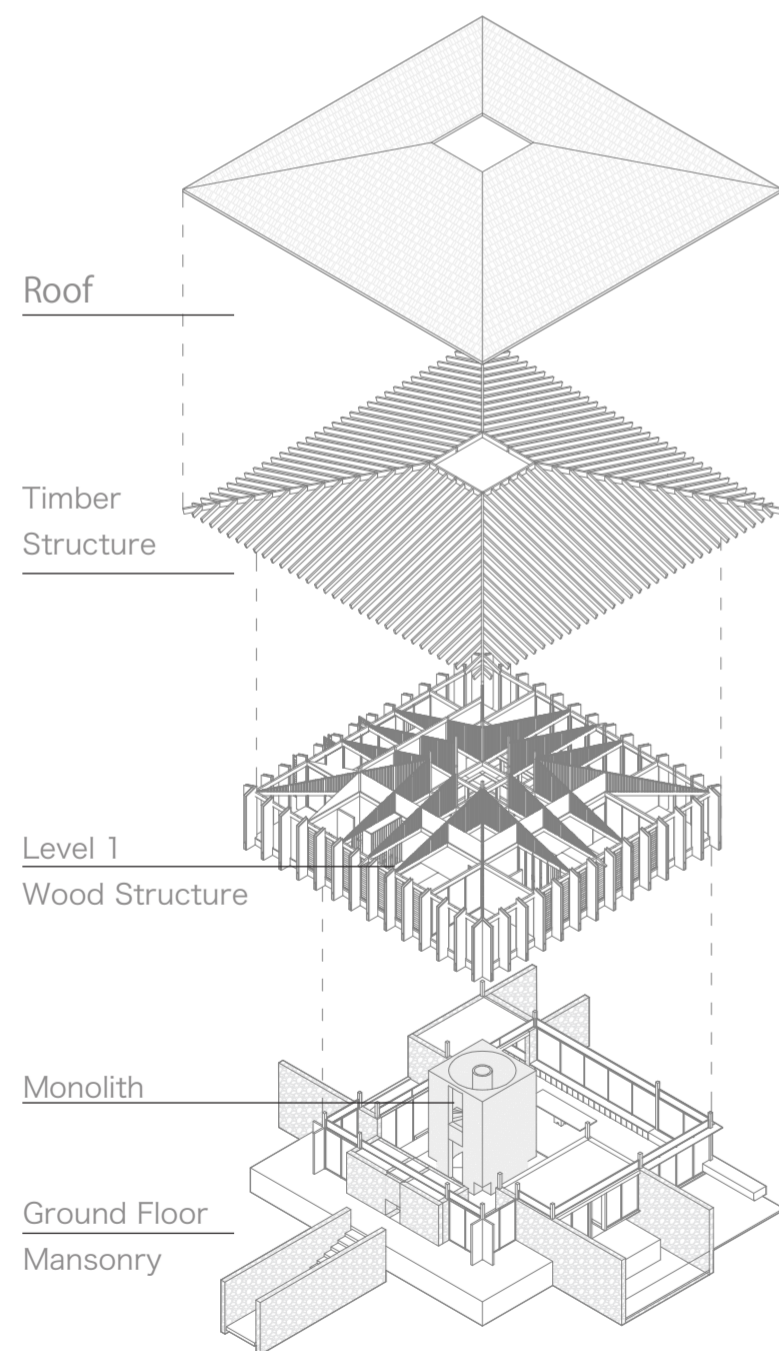
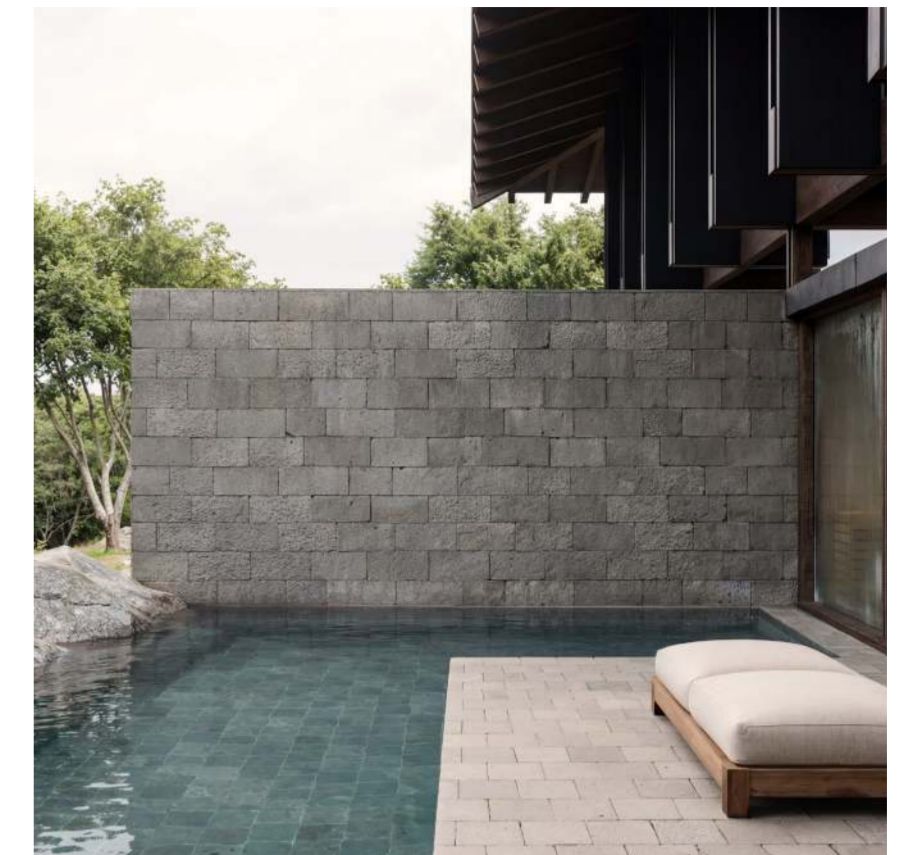


Entry

Above the stone base, a wooden structure is carefully assembled, honoring the tradition of Japanese carpentry and its precise systems of joinery. Here, stone gives way to wood as a living material, marking a transition from permanence to intimacy. Sleeping and bathing occur within this timber structure, where warmth, tactility, and craftsmanship define the most personal moments of inhabitation, reinforcing a close relationship between body, material, and space. The roof, supported entirely by the central core, takes the form of a four-pitched wooden structure clad in ceramic tiles. More than a protective element, it becomes an instrument for engaging with Yakushima's climate. Rain is received, guided along its slopes, and released gently as sound, allowing water to be perceived not as an inconvenience, but as an essential sensory layer of the architecture. Rather than seeking visual prominence, the project embraces restraint. Through stone, wood, water, and light, it proposes an architecture that does not compete with its surroundings, but quietly belongs to them—an inhabitable pause within the forest, shaped by time, weather, and human presence.



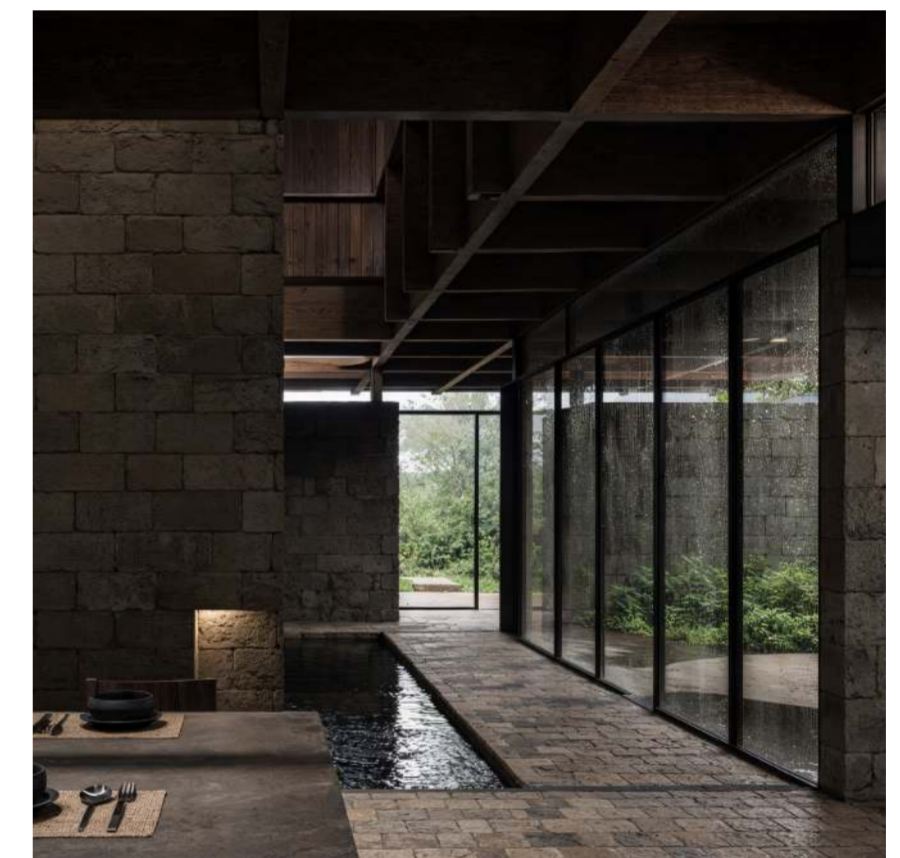
Longitudinal section



Exploded isometric



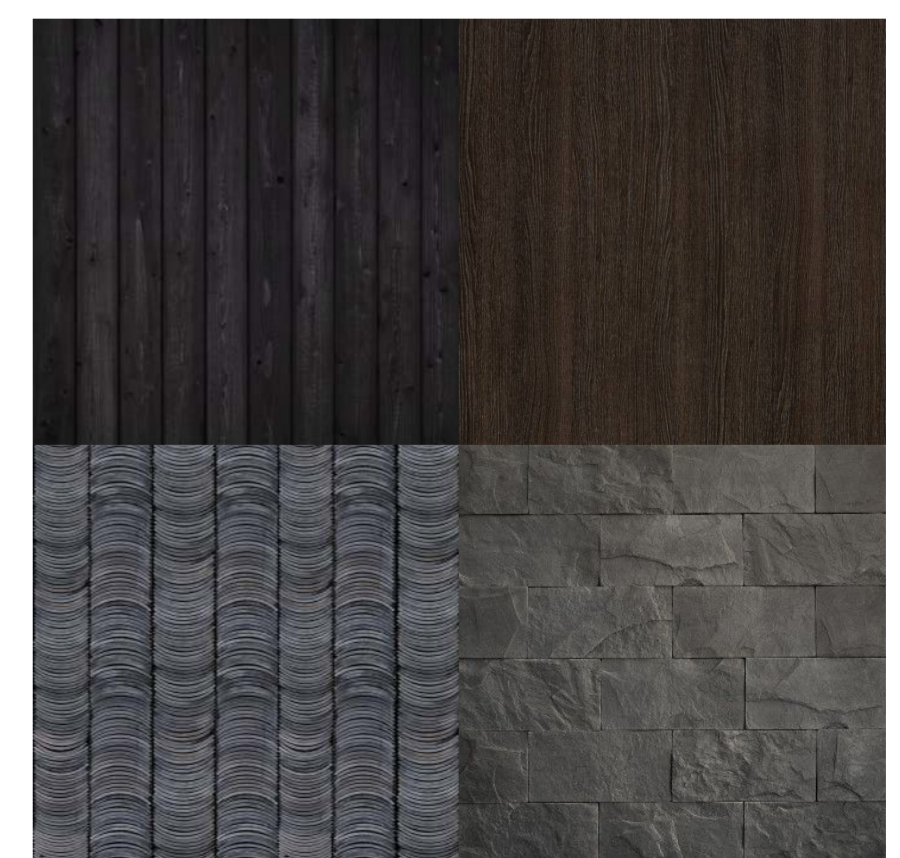
Dining



Promenade



Front Façade



Material Palette