

雨  
の  
音

Sound of Rain

NOT A HOTEL  
Yakushima, Japan

In Yakushima, rain is not an event.  
It is a constant condition from which architecture begins.

Sound of Rain is an architecture formed by accepting this inevitability. It imagines the first moment rainfall was heard on the island, marking when Sky met Earth, and cultural memory began to be shaped by rain.

This project inhabits rain. Rain becomes a collaborator that defines structure, ritual, and experience. The architecture exists as a threshold between shelter and atmosphere, collective memory and inhabitation.

Sound of Rain accepts rainfall not as a moment to be managed, but as a condition from which space, ritual, and shelter emerge.

What remains is not an object in the landscape, but a calibrated state of inhabitation, where gravity, water, and time quietly shape how one arrives, dwells, and remembers.

Here, the sound of rain becomes architecture.

Top: Site Plan | Scale 1:1000 at A2  
Left: Sound of Rain, Yakushima, Japan



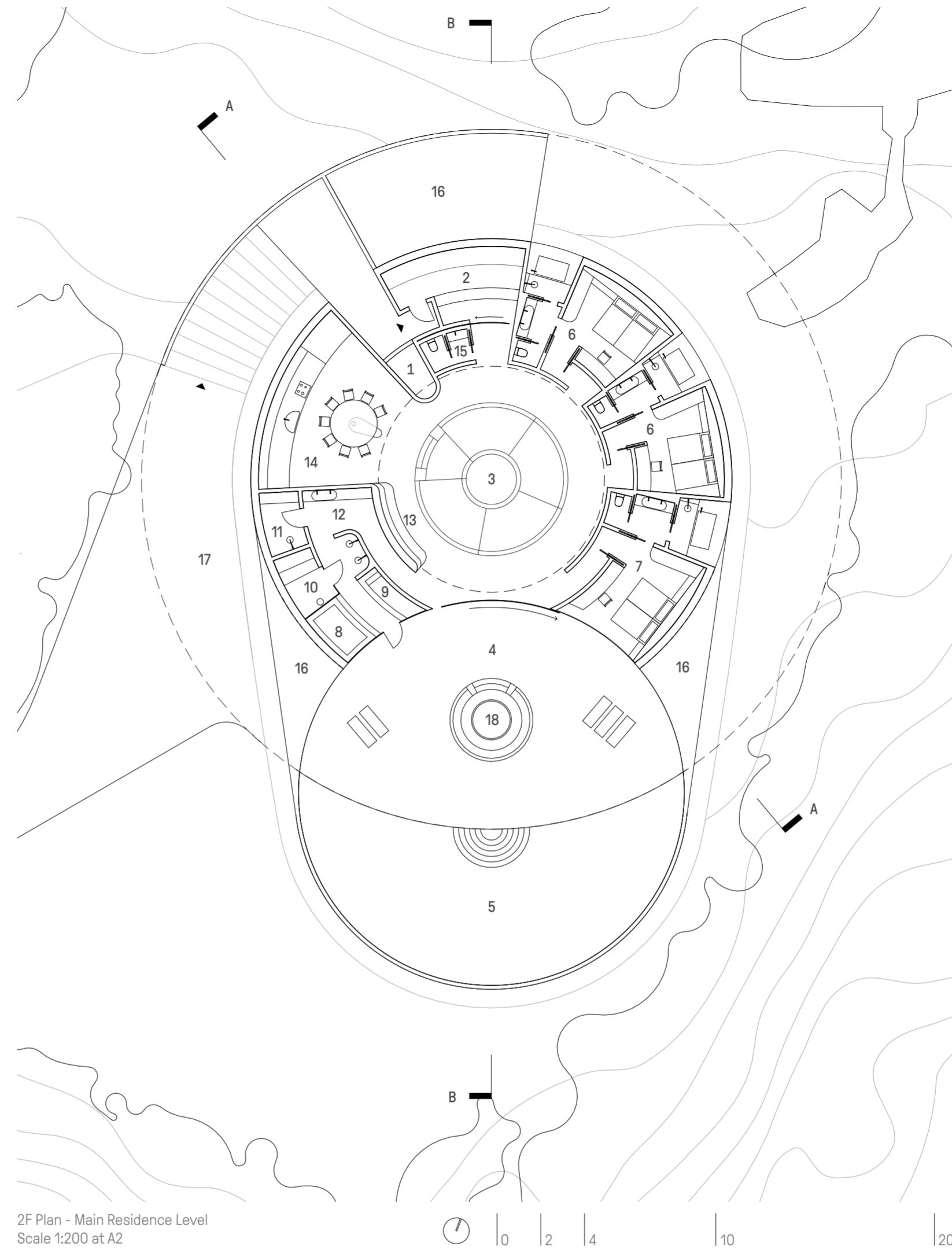
Thin veil of rainwater briefly staged on roof plane before flowing by gravity to filtration, bathing, and water reuse.

### Spatial Order of Ritual, Light, Shadow, and Time

The plan is organized around clarity and use. Light is restrained where rest is required and released where gathering occurs. Entry unfolds gradually through texture and sound. An invitation for the body to slow and to recalibrate its sense of time. Sleeping chambers are grouped to one side, intentionally withdrawn, darkened, and protected. Shadow cultivated in the spirit of Jun'ichirō Tanizaki, allowing stillness, retreat, and recovery to take hold. Opposite, shared functions, conversation, cooking, bathing, and fire, gather around a central atrium. An elemental sequence unfolds along a single north-south axis: antechamber, sunken conversation lounge, outdoor irori, and bathing pool. Earth, air, fire, and water are experienced through ritual rather than representation. Routine dissolves into attentiveness. Time slows, measured by rain heard throughout the building: on stone, across water, and softened through clay and cedar interiors.

### Rain as Structure. Roof as Infrastructure.

Rain is integrated as a controlled, legible system rather than a visual effect. The roof geometry is derived directly from Yakushima's rainfall volume, gravity flow, and collection efficiency. A thin veil of rainwater rests briefly above the central oculus, softening daylight and cooling the interior below. Sunlight and moonlight enter indirectly, filtered through rain, roof depth, stone and clay, producing a soft, temporal glow that shifts with weather and season. Once this moment is registered, visually and acoustically, the water flows by gravity, cascading through a carved opening at the entry before continuing downward for filtration and reuse for bathing. Water is never stored as spectacle. It is staged, released, and returned, forming a continuous cycle between sky, roof, body, and ground.



2F Plan - Main Residence Level  
Scale 1:200 at A2

### Framework & Longevity

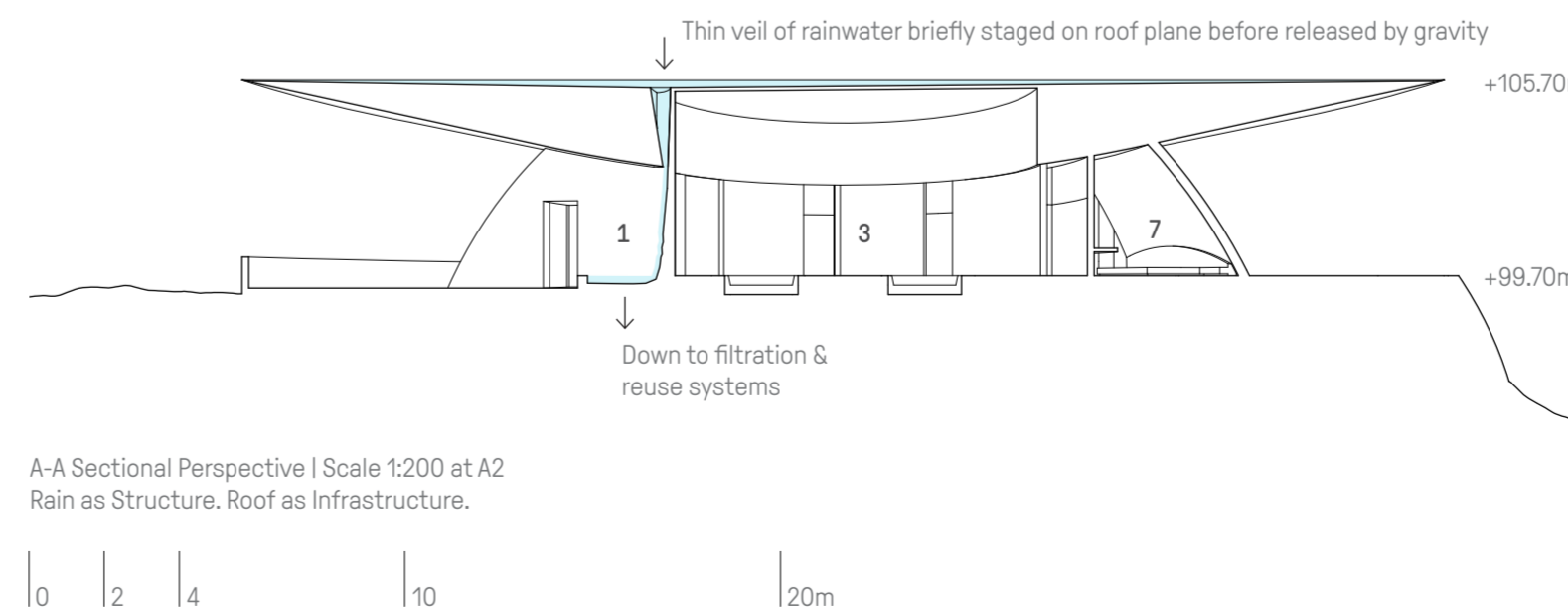
The architecture is conceived as a resilient spatial framework. A clear geometric logic allows refinement over time: adjusting proportions, program, or construction efficiencies without compromising the core idea. Integrated systems allow structure, drainage, and material articulation to be refined through design development while preserving geometric clarity, spatial intent, and ritual experience. This supports long-term adaptability and operational resilience.

### Drawings Legend

- 1 Entry Rainfall Feature Garden - 3 m<sup>2</sup>
- 2 Entry / Antechamber (Earth) - 17 m<sup>2</sup>
- 3 Living / Conversation Lounge (Air/Wind/Void) - 100m<sup>2</sup>
- 4 Outdoor Terrace with Irori (Fire) - 137 m<sup>2</sup>
- 5 Infinity Pool (Water) - 108 m<sup>2</sup>
- 6 Guest Bedroom + Ensuite Washroom - 27 m<sup>2</sup>
- 7 Primary Bedroom + Ensuite Washroom - 32 m<sup>2</sup>
- 8 Hot Bath
- 9 Cold Plunge Pool
- 10 Sauna - 5 m<sup>2</sup>
- 11 Changeroom - 5 m<sup>2</sup>
- 12 Spa - 25 m<sup>2</sup>
- 13 Stone Hearth / Fireplace
- 14 Kitchen & Dining - 37 m<sup>2</sup>
- 15 Powder Room - 3 m<sup>2</sup>
- 16 Rock Garden
- 17 Covered Parking 57 m<sup>2</sup>
- 18 Irori
- 19 Outdoor & Building Services Equipment Storage - 100 m<sup>2</sup>  
(Discretely integrated below the main residence floor, easily accessible from covered parking area for owners or service and maintenance personnel. Storage area can be adaptively decreased or increased if required for more storage area or secure carparking garage space)



1F Plan - Outdoor & Building Services Equipment Storage Level  
Scale 1:500 at A2



A-A Sectional Perspective | Scale 1:200 at A2  
Rain as Structure. Roof as Infrastructure.

### Area Notes

Total Habitable Floor Area: 278 m<sup>2</sup>  
Total Construction Floor Area: 683m<sup>2</sup> (including outdoor spaces, pool, covered parking, and outdoor equipment storage area)

### Dimension Notes

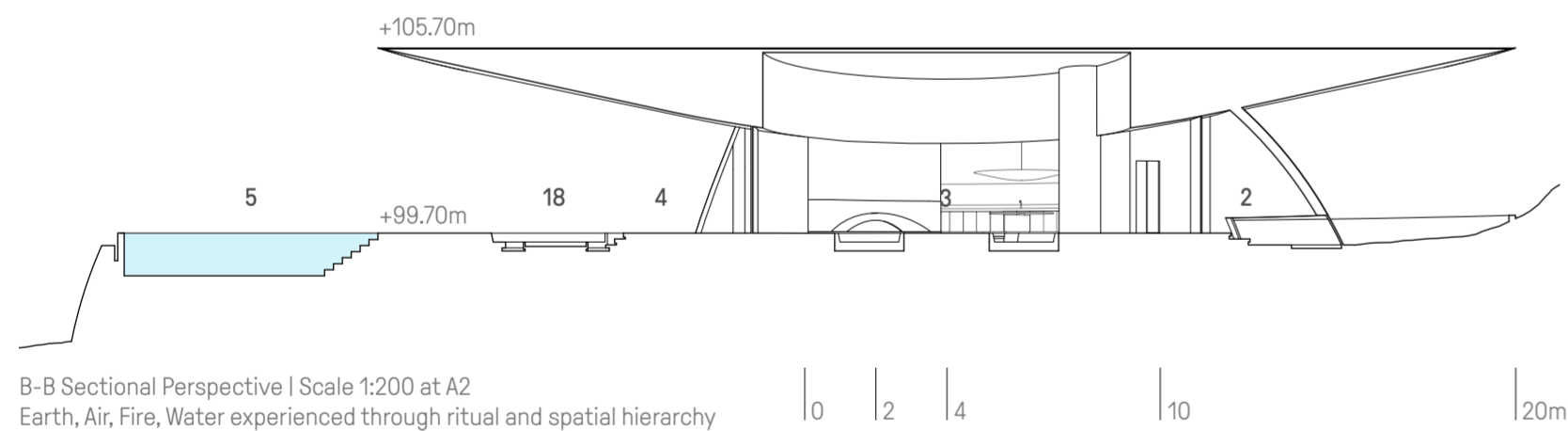
Roof Radius: 16000mm  
Building Radius: 10650mm  
Outdoor Terrace Radius: 8820mm

### Elevation Notes

1F Level: +97.00m  
2F Level: +99.70m  
Roof Level: +105.70m



Private bedroom ensuite bath opens to forest. A dialogue between interior and nature.



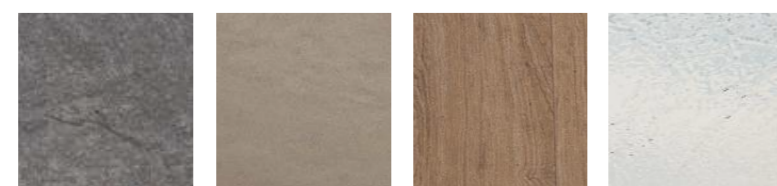
Central Atrium. Daylight and moonlight filtered through staged rainfall at the central oculus, marking the passage of time. Structural articulation is integrated within the geometry, allowing refinement of glazing segmentation and support while preserving spatial clarity and ritual intent.

### Sense of Place

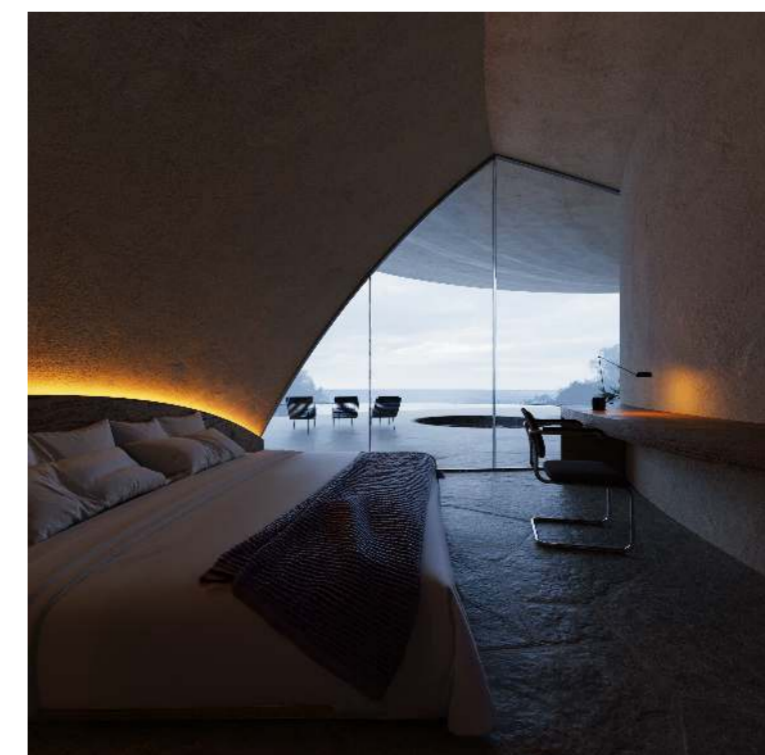
With its rainfall intensity, cultural bathing rituals, and volcanic geology, Sound of Rain is conceived exclusively for Yakushima and could exist nowhere else. A granite plinth emerges from the ground like a found artefact, rising directly from Yakushima's geology. A deeply cantilevered roof shelters without enclosing, evoking the protective span of a great tree. Its depth and mass carry the weight of the sky, while the stone base anchors the building firmly to the earth. Forest, stone, and shelter overlap, allowing the transition from landscape to interior to occur perceptually rather than physically. The architecture reads as both ancient and precise. Gravitational yet suspended. Appearing less constructed than discovered, shaped by climate rather than imposed upon it.

### Materiality

Materials are selected for origin, longevity, and their capacity to age with dignity. Yakushima granite, excavated on site or sourced locally, forms the base and primary structure, supporting both physical anchoring and the continuation of local stonemasonry craft. Clay plaster walls are composed from local sand, filtered Yakushima rainwater, crushed local granite, and native local fibres, producing a breathable, tactile finish unique to this place. Yakushima cedar is used with minimal treatment, allowing aroma, warmth, and grain to evolve naturally. Rain, light, and air complete the material palette, strengthening physical materials through constant interaction. Colour, tone, and texture remain adaptable, emerging through collaboration rather than prescription.



Infinity Pool



Primary Bedroom



Outdoor Terrace. Horizon View.